

Engineering Specifications

Elima-Matic Pumps, Accessories & Diaphragms

ES



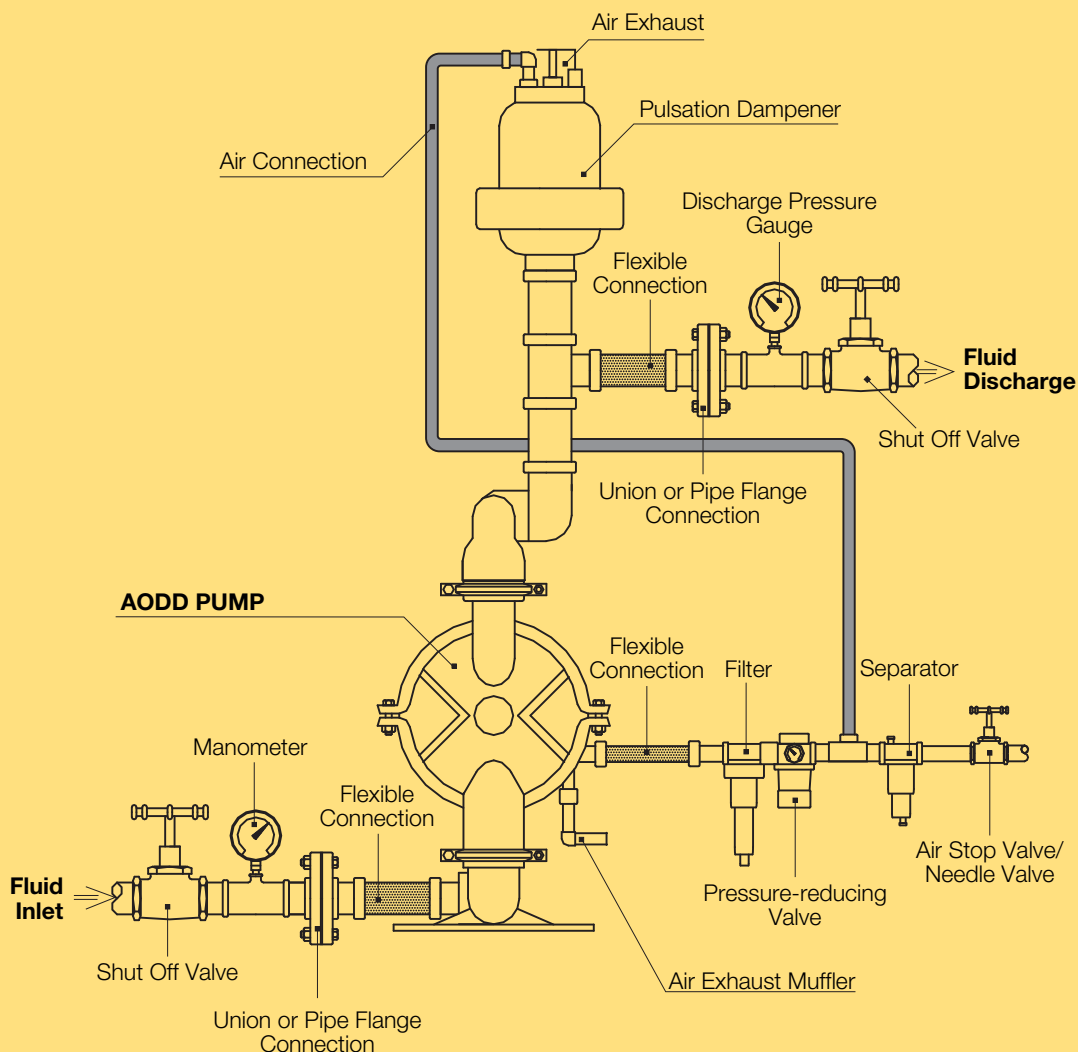
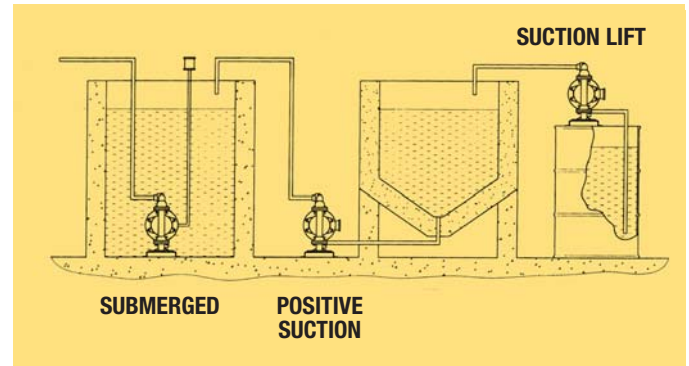
- ▶ Pump Curves, Dimensions & Specifications
- ▶ Application & Installation Guides
- ▶ Materials of Construction, Temperature Limits & Wetted Material Compatibility
- ▶ Troubleshooting Guide

Applications & Installations

SUBMERGED Versa-Matic Pumps are totally submersible. It is important that the air exhaust be ported above the level of the fluid, and that the materials of construction also be compatible with the fluid that the pump is submerged in.

POSITIVE SUCTION For emptying tanks it is important to limit the inlet fluid pressure to approximately 10 PSI (0.69 bar) for PTFE diaphragms and 15 PSI (1.03 bar) for rubber and thermo-plastic diaphragms. Greater inlet pressure can cause erratic pump operation and premature diaphragm failure.

SUCTION LIFT The suction capabilities of each pump may vary due to system design, product being pumped, and pump materials of construction. Please consult the factory with specific criteria.



The Exclusive Elima-Matic® Air Valve System

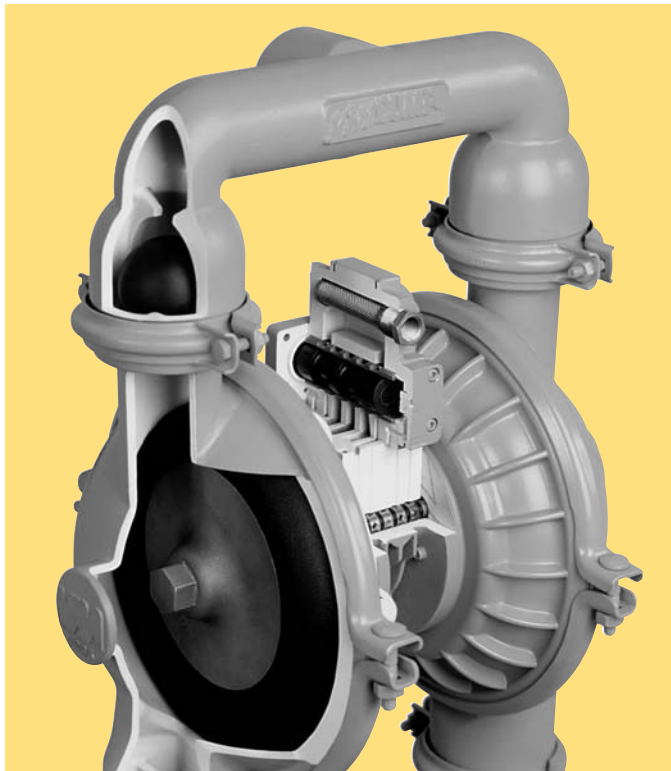
Anti-stalling, Non-icing & Lubrication-free

True to their name, ELIMA-MATIC® pumps virtually eliminate intermittent pump stalling caused by air valve system freeze-ups. By utilizing the patented ELIMA-MATIC® anti-stalling, non-icing, lubrication-free valve system, this common air diaphragm pump problem is a thing of the past.

Eliminating Downtime

ELIMA-MATIC® ensures continuous, reliable pump performance. Here's how it works:

The valve spool is positively shifted by the transfer of a pilot shaft. When the main shaft travels to full-stroke length, the inner piston on the opposite side depresses an internal pilot shaft which ports a burst of compressed air to the main spool valve. The main spool valve reciprocates in a positive reliable shift. As the pilot shaft moves back and forth, an air burst is ported to the main spool which causes it to shift every time, eliminating stalling.



Losing Your Cool

By evacuating compressed air through air passages that are designed to allow a controlled expansion, a considerable reduction in the cooling effect occurs. In addition, the center block and air valve surface areas are ribbed and act as heat exchangers to dissipate the rapid cooling effect.

Ease of Maintenance

The ELIMA-MATIC® not only eliminates freezing and stalling, but maintenance headaches as well. The ELIMA-MATIC® has only two easily accessible center block o-rings — some competitors pumps have as many as seven. The pilot shaft o-rings come out as a complete assembly and are easily replaced without the use of an o-ring tool. And the air valve can be worked on without taking the pump's center section apart.

Maximizing Pumping Performance

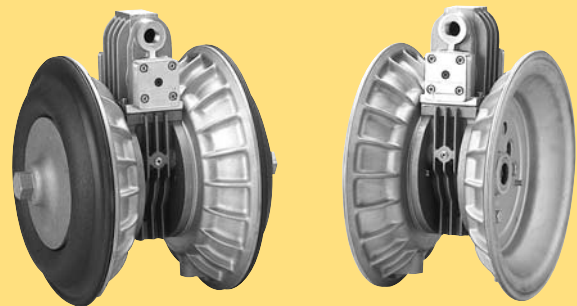
Versa-Matic pumps can already handle anything from water to 90% solids easily and efficiently. Add the ELIMA-MATIC® air valve system and you've got a pump that offers powerhouse performance.

Air Valve Upgrades

Also available as a conversion kit for Versa-Matic V4, V2 and V3 pumps, as well as Wilden® 1 1/4", 2" and 3" metallic pumps, the ELIMA-MATIC® comes with either an aluminum, stainless steel, or PTFE-coated air section. (The air chambers, air valve and center block can be nickel-plated for diverse applications.)

3

Elima-Matic® Retro Fit Centers for V-Series and Wilden® Pumps



Complete Kit

Center Section Only
(Includes Main Shaft)

Available for 1-1/4", 2" and 3" pumps.
Consult Versa-Matic or your local distributor for details.

E6

1/4" Bolted Plastic Pumps

Specifications

Flow Rate adjustable to 0-4 gpm (15 lpm)

Port Size

Inlet and Discharge 0.25" NPTF I.D.

. 0.50" NPTM O.D.

Air Inlet 0.25" NPTF

Air Exhaust 0.75" NPTF

Suction Lift 5.83' Dry/25.5' Wet (1.78m/777m)

Max. Particle Size (Diameter) . . . 0.3125" (1mm)

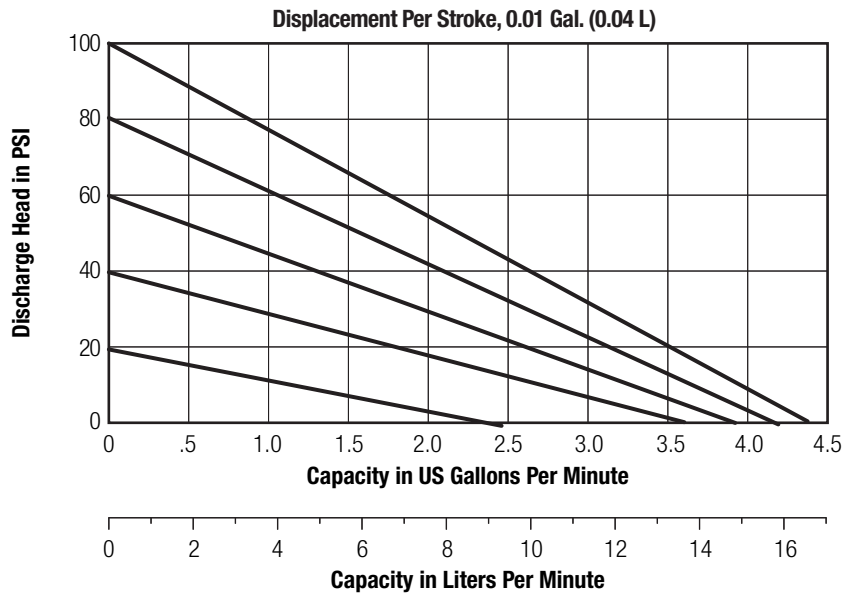
Shipping Weights

Acetal 5.00 lbs (2.27 kg)

Polypropylene 3.38 lbs (1.53 kg)

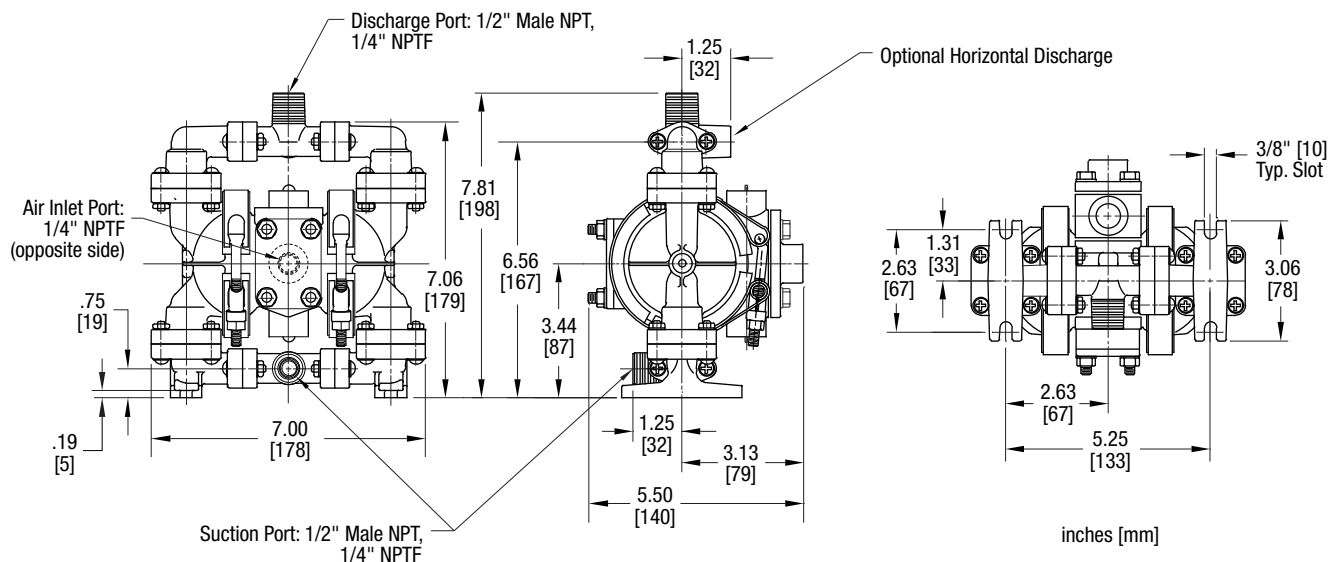
PVDF 4.13 lbs (1.87 kg)

Performance



CAUTION: Do not exceed 100 psig (6.9 bars) air supply or liquid pressure.

Dimensions



Consult factory for certified drawings.

3/8" Bolted Plastic Pumps

E8

Specifications

Flow Rate adjustable to . . . 0-6.8 gpm (26 lpm)

Port Size

Inlet and Discharge 3/8" NPTF (BSP)

Air Inlet 0.25" NPT

Air Exhaust 0.25" NPT

Suction Lift (dry) 16' (4.9 m)

PTFE (dry) 16' (4.9 m)

Max. Particle Size (Dia.) 0.10" (2.5 mm)

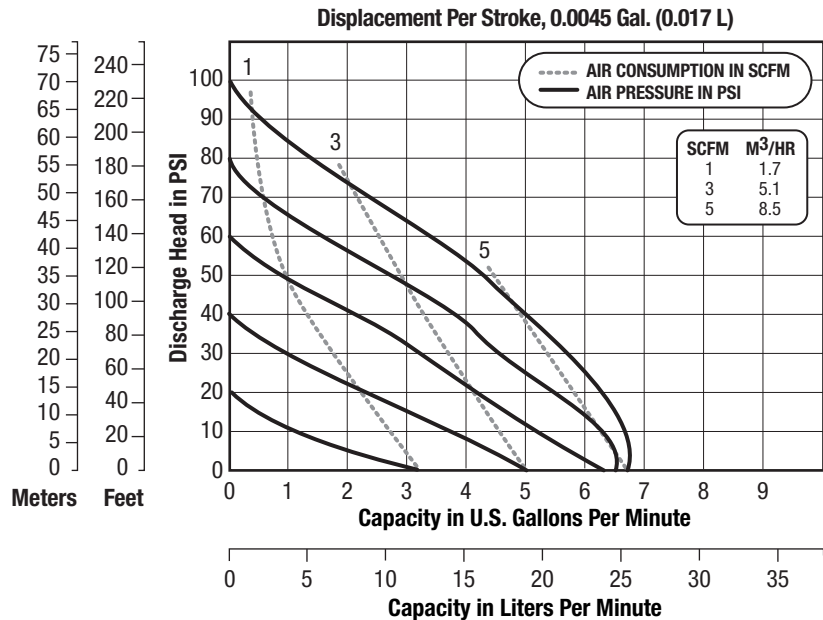
Shipping Weight

Polypropylene 3.0 lbs (1.36 kg)

Kynar 3.0 lbs (1.36 kg)

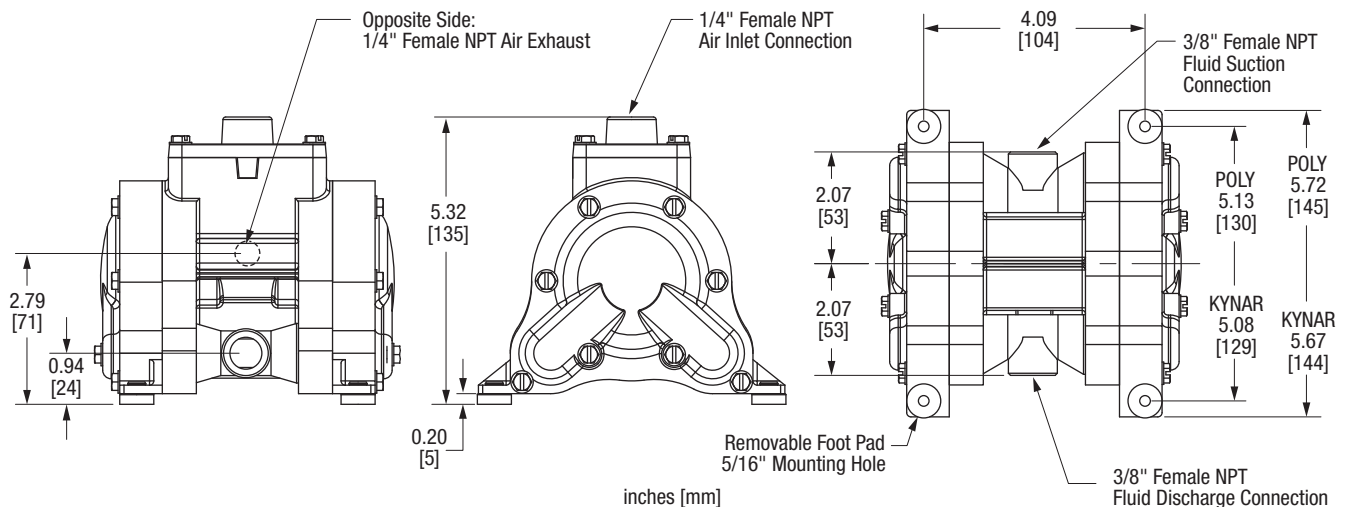


Performance



CAUTION: Do not exceed 100 psig (6.9 bars) air supply or liquid pressure.

Dimensions



Consult factory for certified drawings.

Specifications

Flow Rate adjustable to . . . 0-14 gpm (53 lpm)

Port Size

Inlet and Discharge 0.50" NPT

Air Inlet 0.375" NPT

Air Exhaust 0.375" NPT

Suction Lift . . 15' Dry/25' Wet (6.096m/7.62m)

PTFE 5' Dry/10' Wet (1.52m/3.048m)

Max. Particle Size (Dia.) 0.0625" (1.6mm)

Shipping Weights

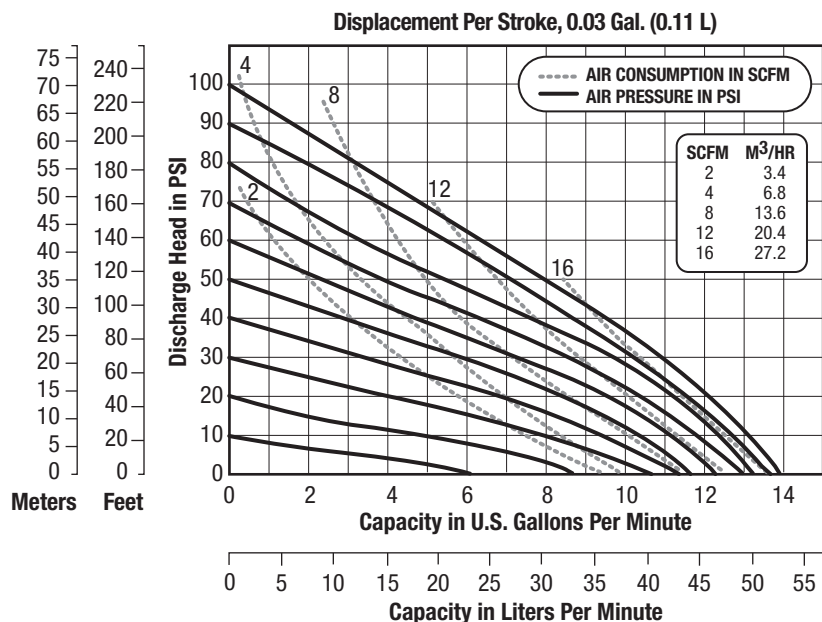
316 Stainless Steel 18 lbs (8.17 kg)

Hastelloy C 18 lbs (8.17 kg)

Aluminum 15 lbs (6.80 kg)

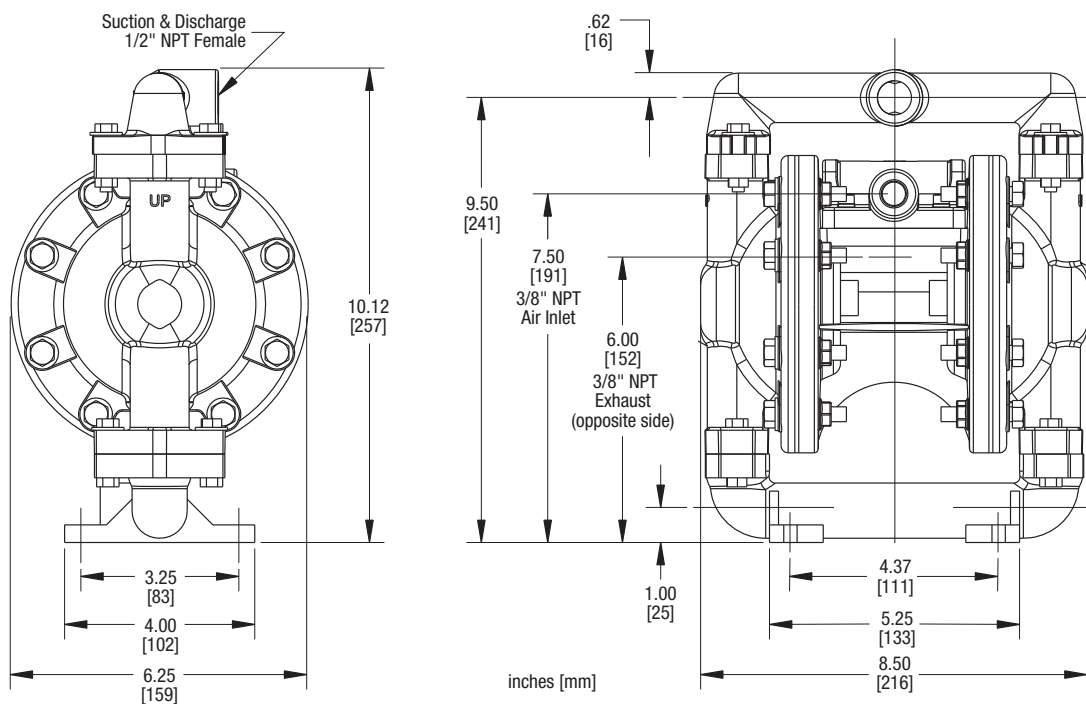


Performance



CAUTION: Do not exceed 100 psig (6.9 bars) air supply or liquid pressure.

Dimensions



Consult factory for certified drawings.

1/2" Bolted Plastic Pumps

Aluminum Air Section Available

E5

Specifications

Flow Rate adjustable to 0-14 gpm (53 lpm)

Port Size Inlet and Discharge

. 0.50" NPT I.D.

. 0.75" NPT O.D.

Air Inlet 0.375" NPT

Air Exhaust 0.375" NPT

Suction Lift . . 15' Dry/25' Wet (6.096m/7.62m)

PTFE 5' Dry/10' Wet (1.52m/3.048m)

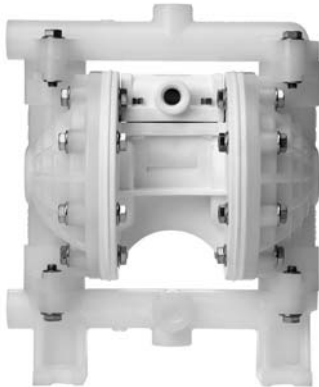
Max. Particle Size (Diameter) . . 0.0625"(1.6mm)

Shipping Weights

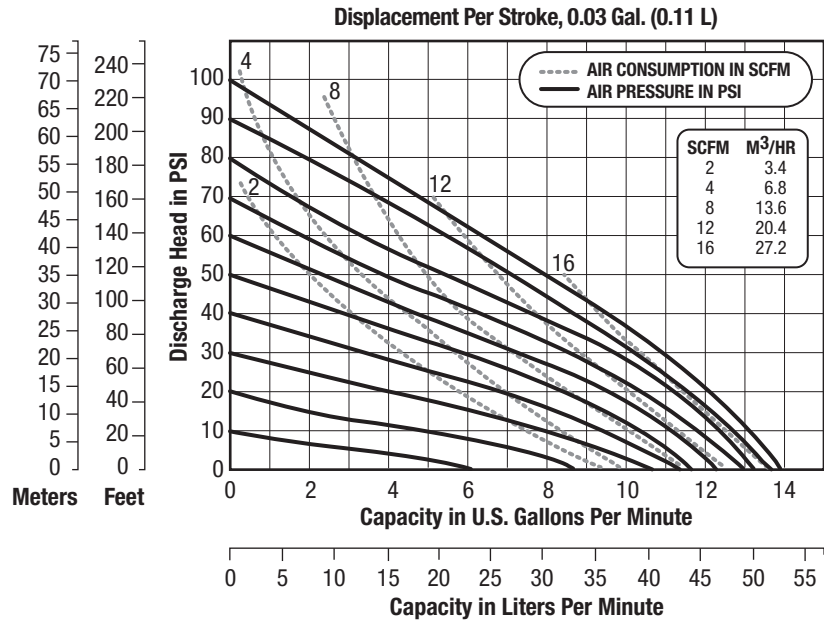
Polypropylene 10 lbs (4.54 kg)

Kynar® 10 lbs (4.54 kg)

Acetal 12 lbs (5.45 kg)

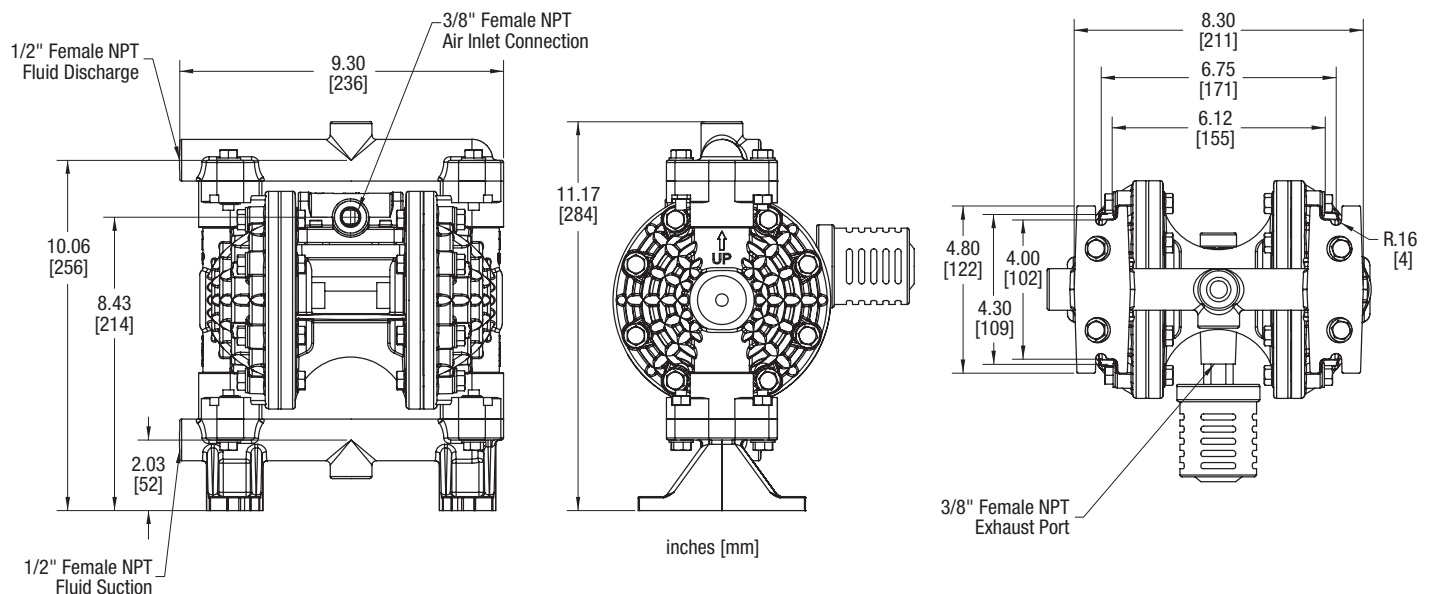


Performance



CAUTION: Do not exceed 100 psig (6.9 bars) air supply or liquid pressure.

Dimensions



Consult factory for certified drawings.

E5

1/2" Food Processing Pump

Aluminum Air Section Available

Specifications

Flow Rate adjustable to . . . 0-14 gpm (53 lpm)**Port Size**

Inlet and Discharge 1" Tri-Clamp®

Air Inlet 0.375" NPT**Air Exhaust** 0.375" NPT**Suction Lift** . . 15' Dry/25' Wet (6.096m/7.62m)

PTFE 5' Dry/10' Wet (1.52m/3.048m)

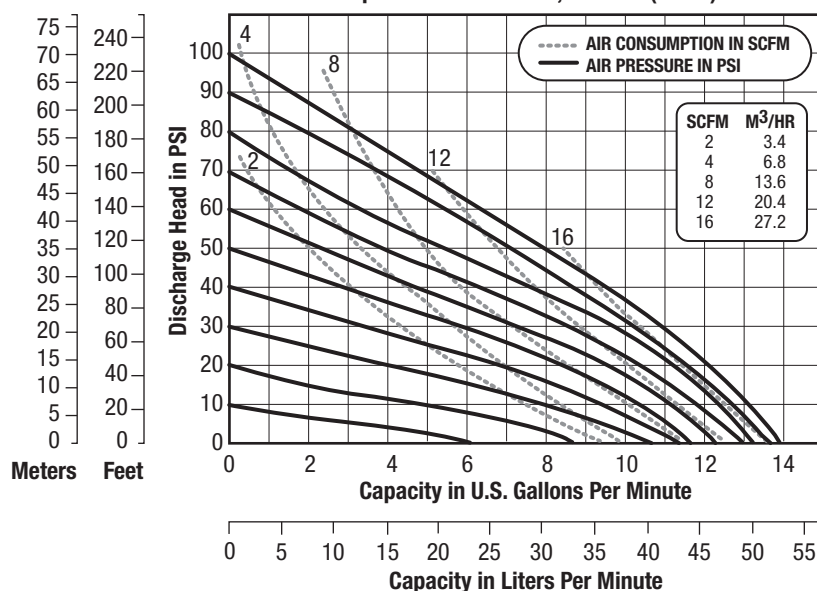
Max. Particle Size (Dia.) 0.0625" (1.6mm)**Shipping Weights**

316 Stainless Steel 18 lbs (8.17 kg)



Performance

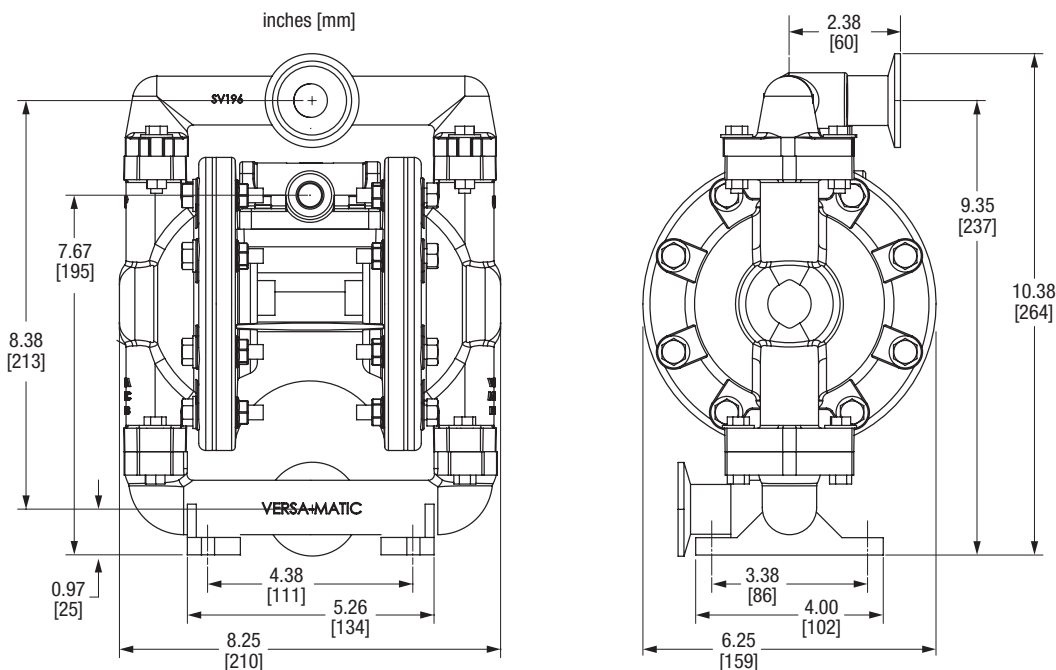
Displacement Per Stroke, 0.03 Gal. (0.11 L)



NOTE: For E5 pumps fitted with PTFE diaphragms, reduce water discharge figures by 20%.
Suction lift is reduced to 10' (3.05m) dry and 20' (6.10m) wet.

CAUTION: Do not exceed 100 psig (6.9 bars) air supply or liquid pressure.

Dimensions



Consult factory for certified drawings.

1" Bolted Metallic Pumps with Plastic Centers

E1

Specifications

Flow Rate adjustable to . . . 0-35 gpm (132 lpm)

Port Size

Inlet and Discharge 1.0" Female NPT (BSP)

Air Inlet 0.375" NPT

Air Exhaust 0.50" NPT

Suction Lift . . . 15' Dry/25' Wet (4.57m/7.62m)

PTFE 10' Dry/20' Wet (3.05m/6.10m)

Max. Particle Size (Diameter) . . 0.125" (3.17mm)

Shipping Weights

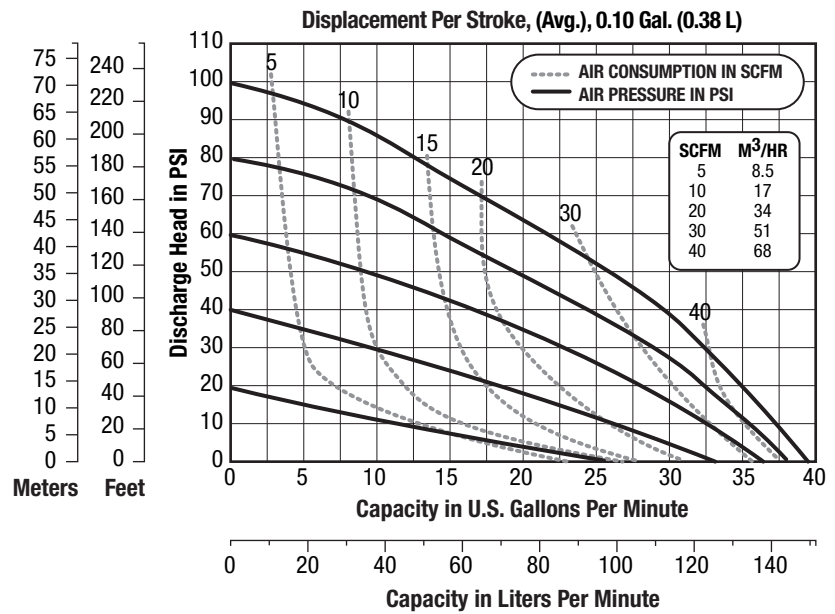
Aluminum 31 lbs (14.07 kg)

316 Stainless Steel 42 lbs (19.05 kg)

Hastelloy C 42 lbs (19.05 kg)



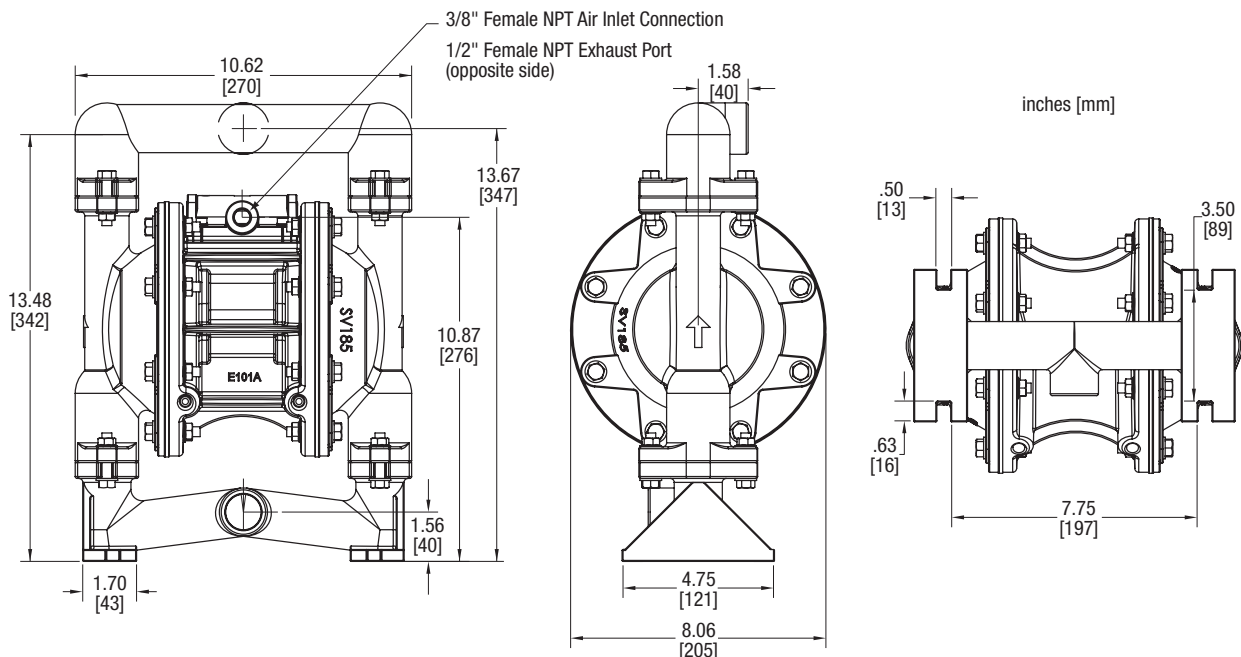
Performance



NOTE: For E1 pumps fitted with PTFE diaphragms, reduce water discharge figures by 20%. Suction lift is reduced to 10' (3.05m) dry and 20' (6.10m) wet.

CAUTION: Do not exceed 125 psig (8.5 bars) air supply or liquid pressure.

Dimensions



Consult factory for certified drawings.

E1

1" UL Listed Pump with Grounding Strap

Specifications

Flow Rate adjustable to . . . 0-35 gpm (132 lpm)

Port Size

Inlet and Discharge 1.0" Female NPT (BSP)

Air Inlet 0.375" NPT

Air Exhaust 0.50" NPT

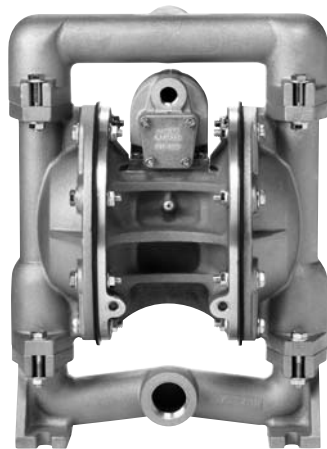
Suction Lift . . . 15' Dry/25' Wet (4.57m/7.62m)

PTFE 10' Dry/20' Wet (3.05m/6.10m)

Max. Particle Size (Diameter) . . 0.125"(3.17mm)

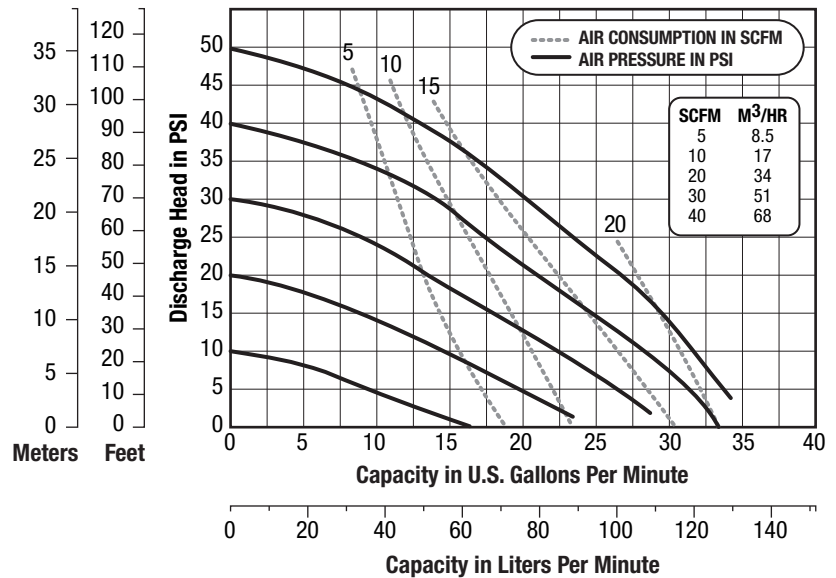
Shipping Weight

Aluminum 31 lbs (14.07 kg)



Performance

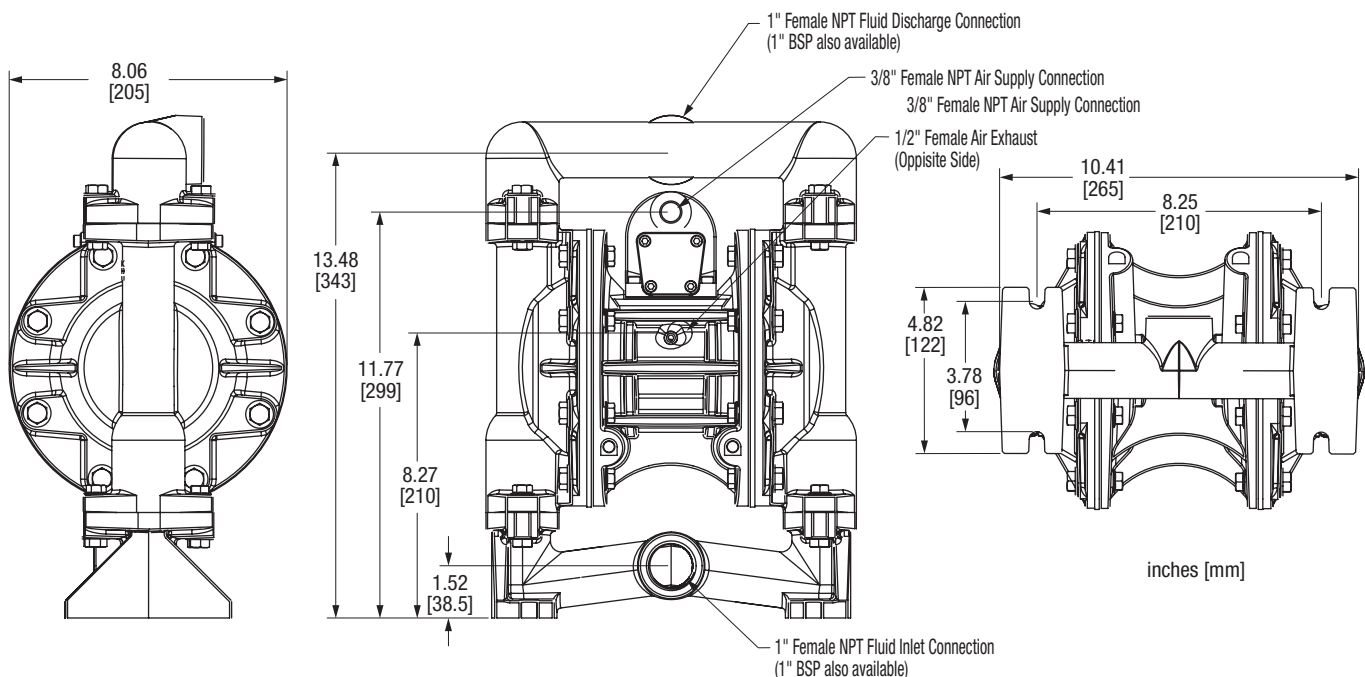
Displacement Per Stroke, (Avg.), 0.10 Gal. (0.38 L)



NOTE: For E1 pumps fitted with PTFE diaphragms, reduce water discharge figures by 20%.
Suction lift is reduced to 10' (3.05m) dry and 20' (6.10m) wet.

CAUTION: Do not exceed 50 psig (3.4 bars) air supply or liquid pressure.

Dimensions



Consult factory for certified drawings.

1" Bolted Plastic Pumps with Plastic Centers

Standard Side Porting — Aluminum Air Section Available

E1

Specifications

Flow Rate adjustable to . . . 0-35 gpm (132 lpm)

Port Size

Inlet and Discharge 1.0" ANSI/DIN Flanged

Air Inlet 0.375" NPT

Air Exhaust 0.50" NPT

Suction Lift . . . 15' Dry/25' Wet (4.57m/7.62m)

PTFE 10' Dry/20' Wet (3.05m/6.10m)

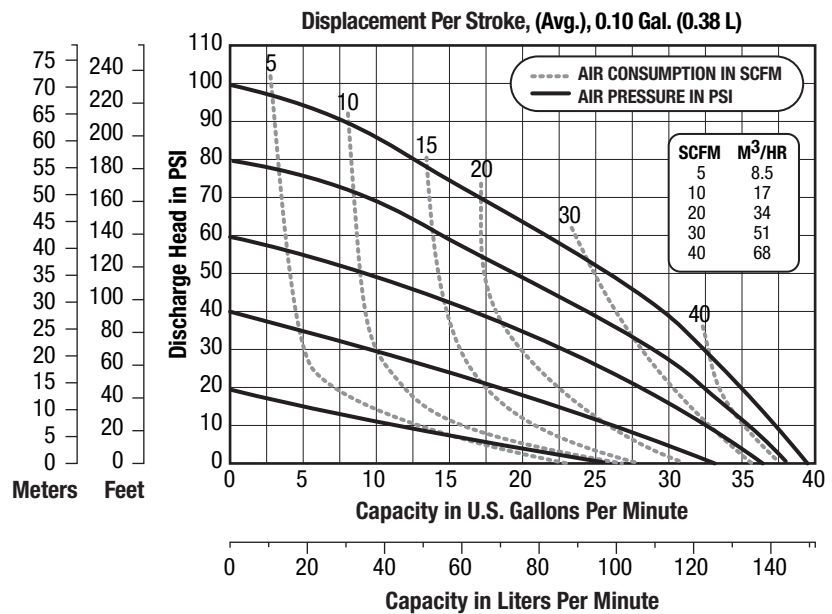
Max. Particle Size (Dia) 0.125"(3.17mm)

Shipping Weights

Polypropylene 24 lbs (10.89 kg)

Kynar® 24 lbs (10.89 kg)

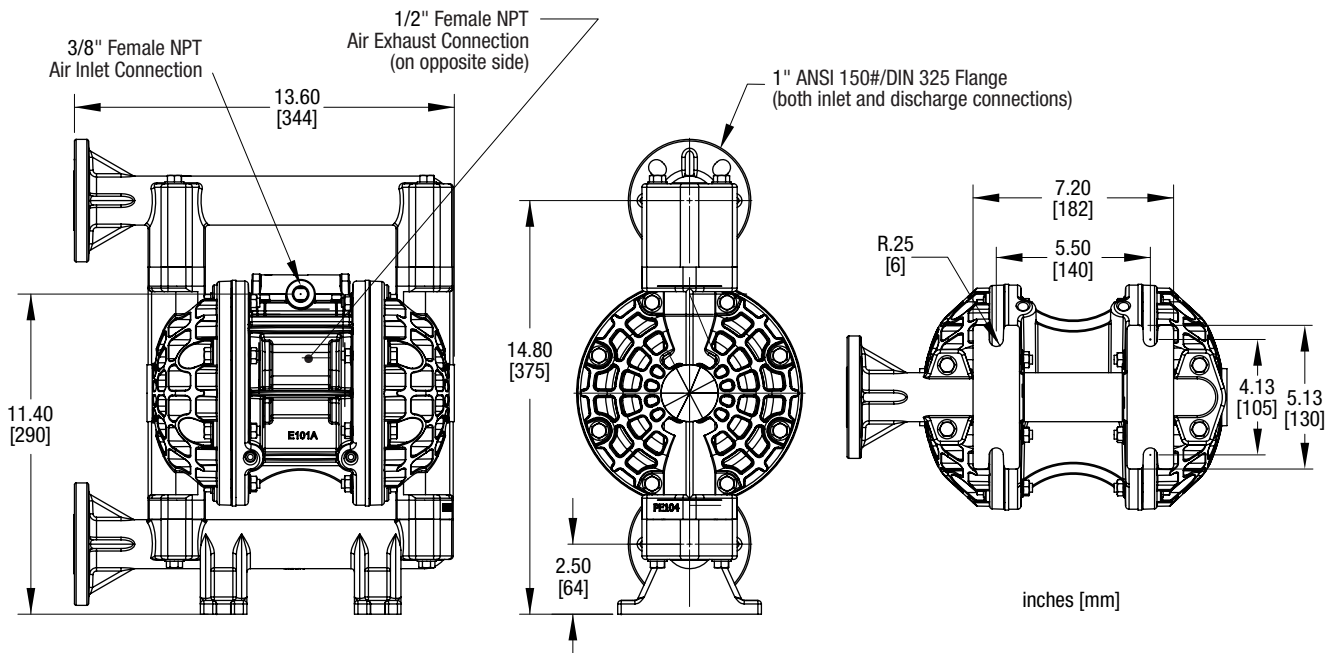
Performance



NOTE: For E1 pumps fitted with PTFE diaphragms, reduce water discharge figures by 20%.
Suction lift is reduced to 10' (3.05m) dry and 20' (6.10m) wet.

CAUTION: Do not exceed 100 psig (6.9 bars) air supply or liquid pressure.

Dimensions



Consult factory for certified drawings.

Specifications

Flow Rate adjustable to . . . 0-35 gpm (132 lpm)

Port Size

Inlet and Discharge 1.0" ANSI/DIN Flanged

Air Inlet 0.375" NPT

Air Exhaust 0.50" NPT

Suction Lift . . . 15' Dry/25' Wet (4.57m/7.62m)

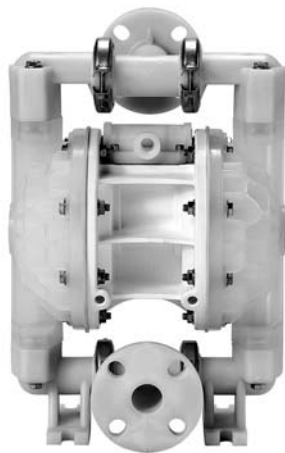
PTFE 10' Dry/20' Wet (3.05m/6.10m)

Max. Particle Size (Dia.) 0.125"(3.17mm)

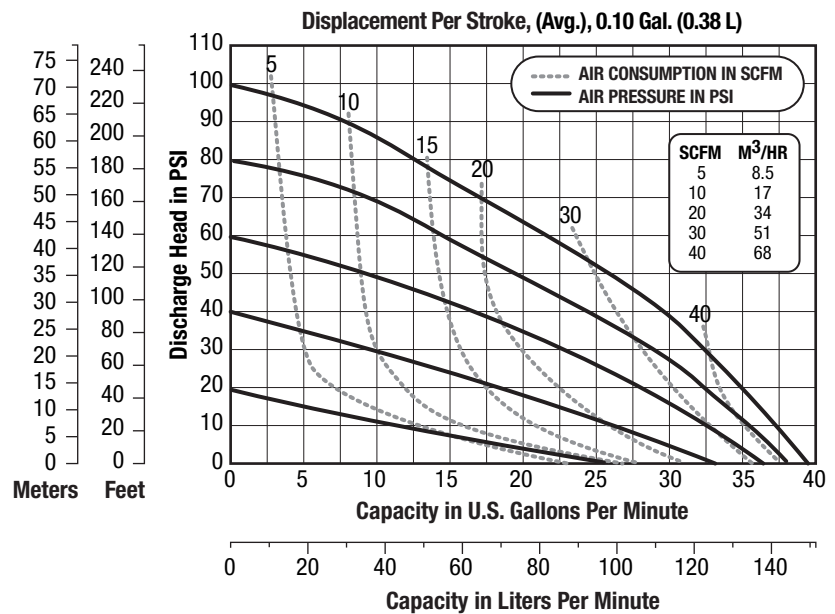
Shipping Weights

Polypropylene 24 lbs (10.89 kg)

Kynar® 24 lbs (10.89 kg)



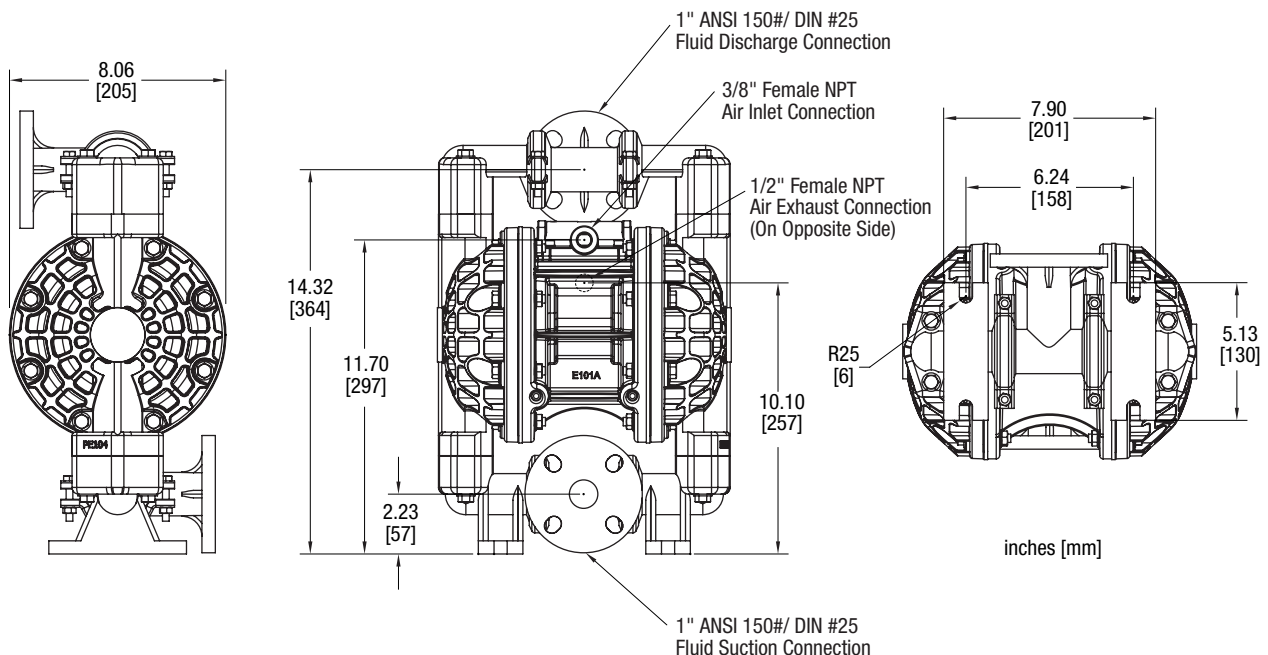
Performance



NOTE: For E1 pumps fitted with PTFE diaphragms, reduce water discharge figures by 20%. Suction lift is reduced to 10' (3.05m) dry and 20' (6.10m) wet.

CAUTION: Do not exceed 100 psig (6.9 bars) air supply or liquid pressure.

Dimensions



Consult factory for certified drawings.

1" Food Processing Pump

Aluminum Air Section Available

E1

Specifications

Flow Rate adjustable to . . . 0-35 gpm (132 lpm)

Port Size

Inlet and Discharge 1.5" Tri-Clamp®

Air Inlet 0.375" NPT

Air Exhaust 0.50" NPT

Suction Lift . . . 15' Dry/25' Wet (4.57m/7.62m)

PTFE 10' Dry/20' Wet (3.05m/6.10m)

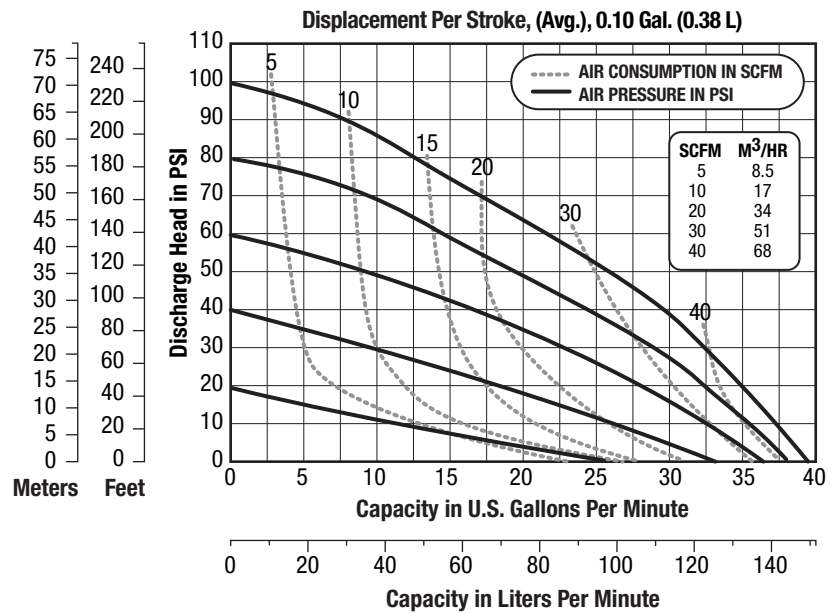
Max. Particle Size (Diameter) . . 0.125"(3.17mm)

Shipping Weights

316 Stainless Steel 42 lbs (19.05 kg)



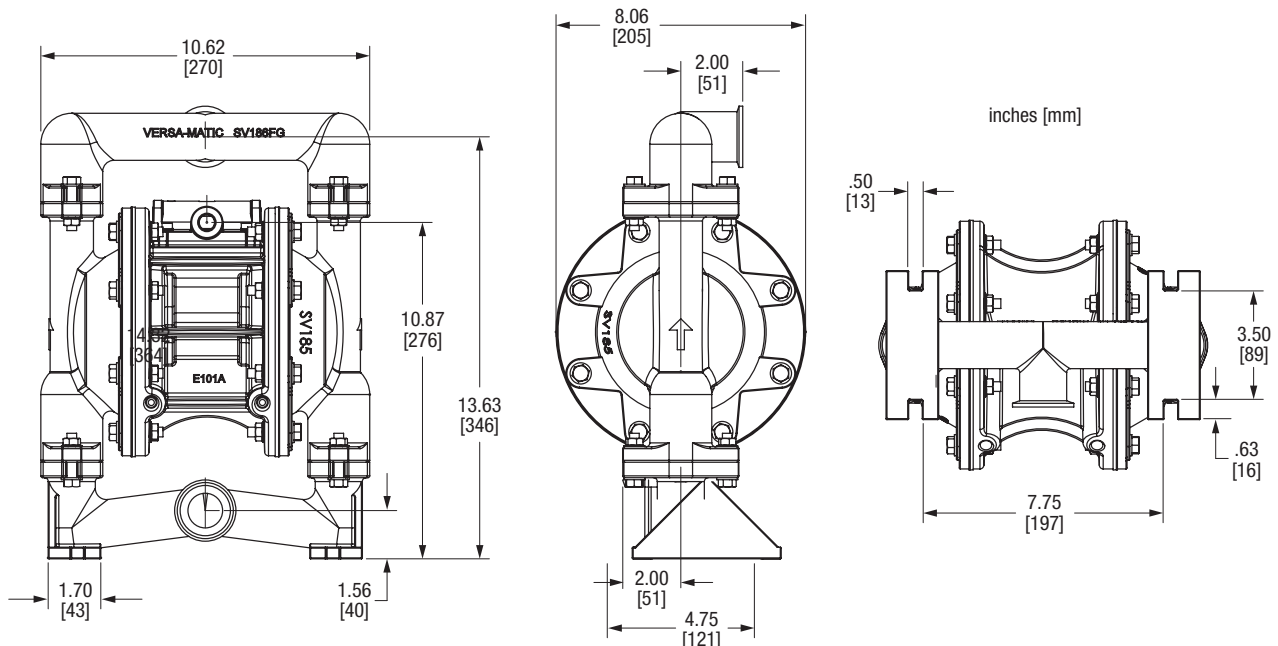
Performance



NOTE: For E1 pumps fitted with PTFE diaphragms, reduce water discharge figures by 20%. Suction lift is reduced to 10' (3.05m) dry and 20' (6.10m) wet.

CAUTION: Do not exceed 125 psig (8.5 bars) air supply or liquid pressure.

Dimensions



Consult factory for certified drawings.

E4

1-1/4" Clamped Metallic Pumps

1-1/2" Discharge Manifold Available, Screen Mount Available for Aluminum Model

Specifications

Flow Rate adjustable to . . . 0-70 gpm (265 lpm)**Port Size**

Inlet 1.50" NPT (BSP)

Discharge 1.25" NPT (BSP)

Air Inlet 0.50" NPT**Air Exhaust** 0.75" NPT**Suction Lift** . . . 15' Dry/25' Wet (4.57m/7.62m)

PTFE 10' Dry/20' Wet (3.05m/6.09m)

Max. Particle Size (Dia.) 0.1875" (4.76mm)**Shipping Weights**

Aluminum 41 lbs (18.60 kg)

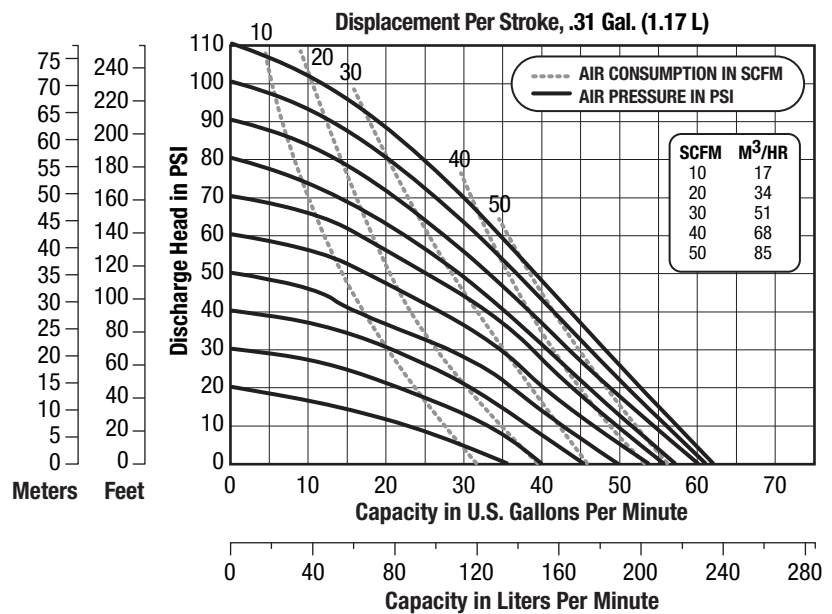
Cast Iron 57 lbs (25.85 kg)

Hastelloy C 57 lbs (25.85 kg)

316 Stainless Steel 57 lbs (25.85 kg)



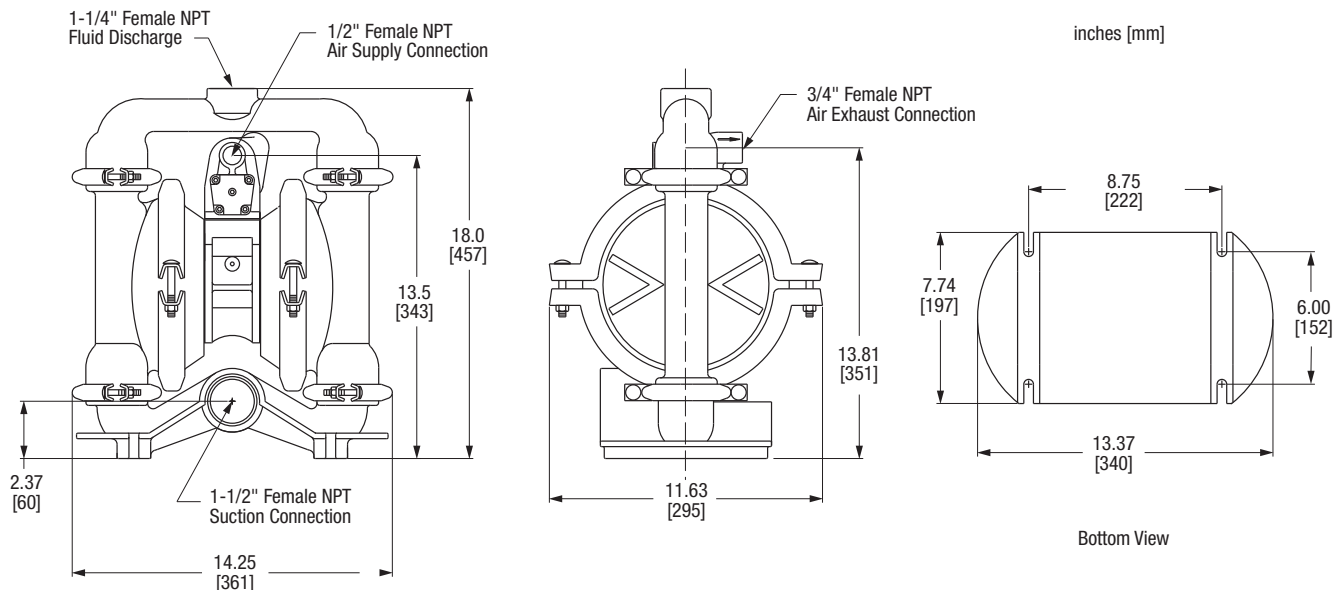
Performance



NOTE: For E4 pumps fitted with PTFE diaphragms, reduce water discharge figures by 20%.
Suction lift is reduced to 10' (3.05m) dry and 20' (6.10m) wet.

CAUTION: Do not exceed 125 psig (8.5 bars) air supply or liquid pressure.

Dimensions



Consult factory for certified drawings.

1-1/2" Bolted Metallic Pumps

Standard Vertical Discharge — Horizontal Discharge Available

E4

Specifications

Flow Rate adjustable to . . . 0-72 gpm (275 lpm)

Port Size

Inlet and Discharge 1.50" ANSI/DIN

Air Inlet 0.50" NPT

Air Exhaust 0.75" NPT

Suction Lift . . . 15' Dry/25' Wet (4.57m/7.62m)

PTFE 10' Dry/20' Wet (3.05m/6.09m)

Max. Particle Size (Dia.) 0.1875" (4.76mm)

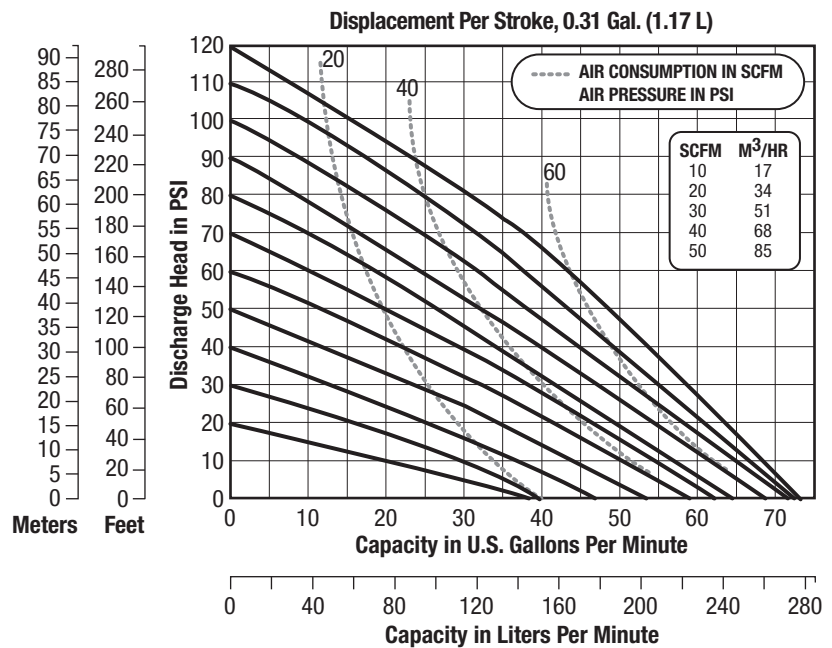
Shipping Weights

316 Stainless Steel 65 lbs (29.48 kg)

Hastelloy C 68 lbs (30.84 kg)



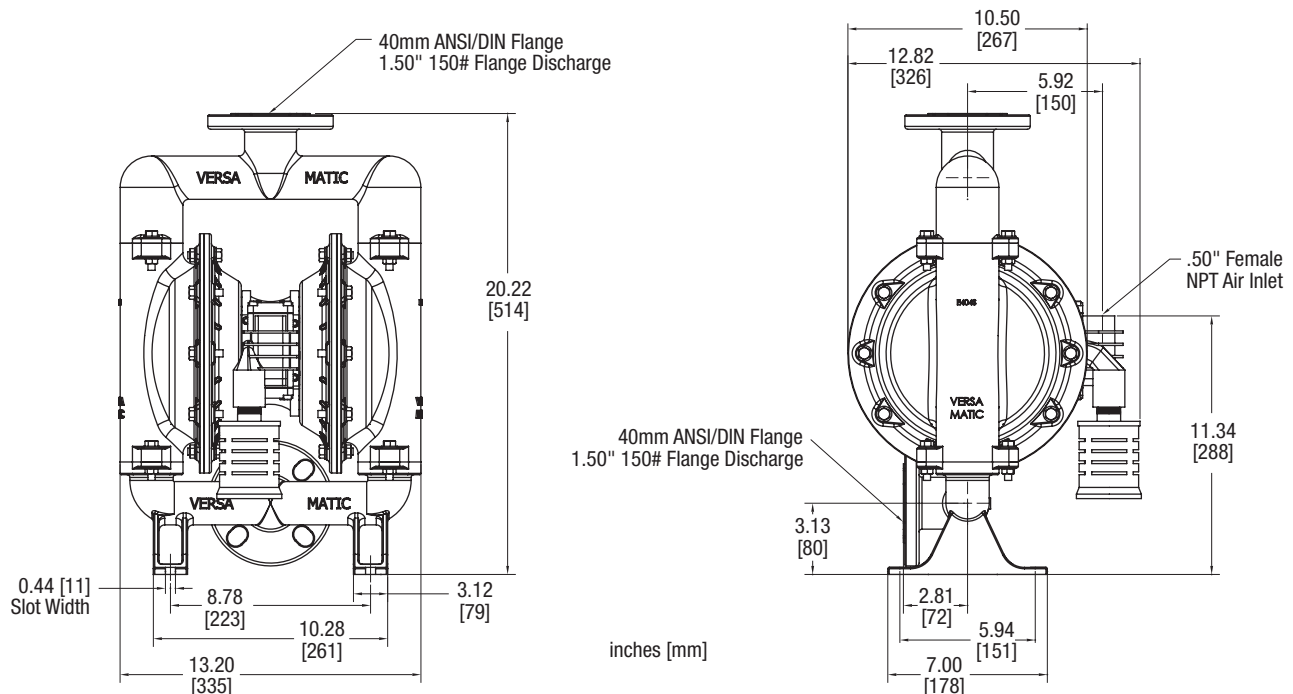
Performance



NOTE: For E4 pumps fitted with PTFE diaphragms, reduce water discharge figures by 20%. Suction lift is reduced to 10' (3.05m) dry and 20' (6.10m) wet.

CAUTION: Do not exceed 125 psig (8.5 bars) air supply or liquid pressure.

Dimensions



Consult factory for certified drawings.

E4

1-1/2" Bolted Plastic Pumps

Swivel Inlet/Discharge

Specifications

Flow Rate adjustable to . . . 0-72 gpm (272 lpm)**Port Size**

Inlet and Discharge . . . 1.50" ANSI/DIN Flanged

Air Inlet 0.50" NPT**Air Exhaust** 0.75" NPT**Suction Lift** . . . 15' Dry/25' Wet (4.57m/7.62m)

PTFE 10' Dry/20' Wet (3.05m/6.09m)

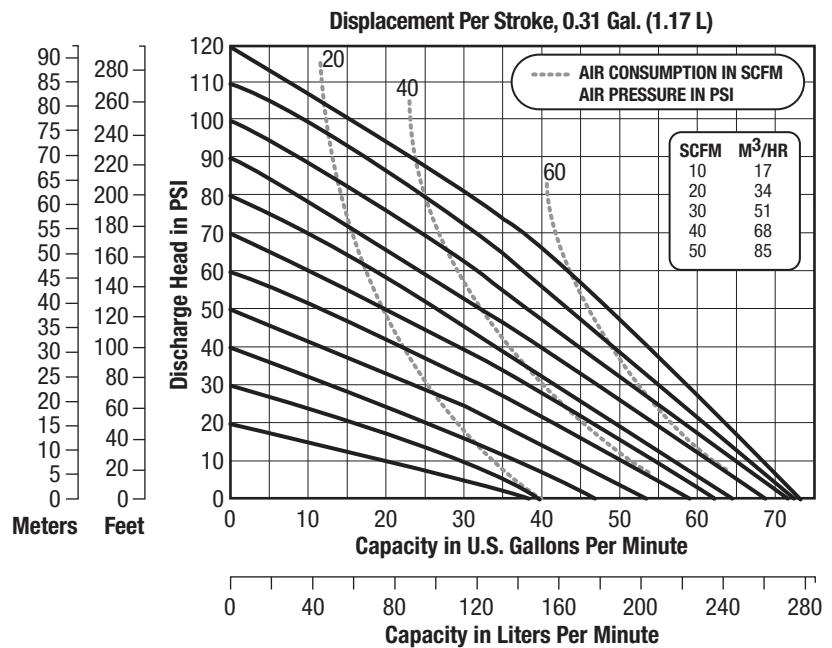
Max. Particle Size (Dia.) 0.1875" (4.76mm)**Shipping Weights**

Polypropylene 32 lbs (14.51 kg)

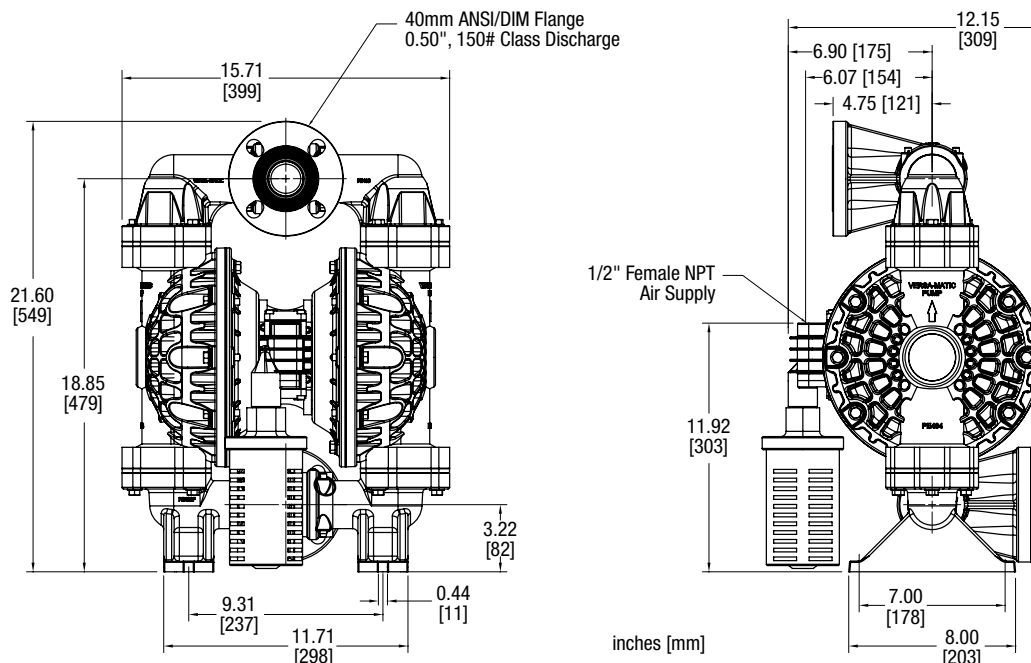
Kynar® 45 lbs (20.41 kg)



Performance

**CAUTION:** Do not exceed 125 psig (8.5 bars) air supply or liquid pressure.

Dimensions



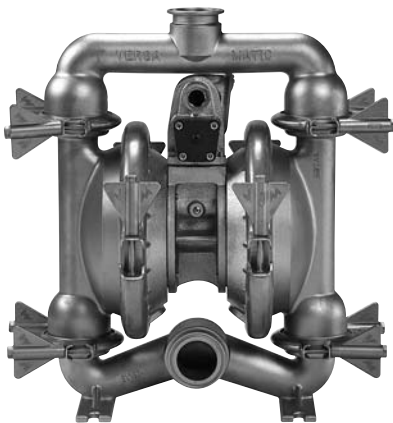
Consult factory for certified drawings.

1-1/2" Food Processing Pump

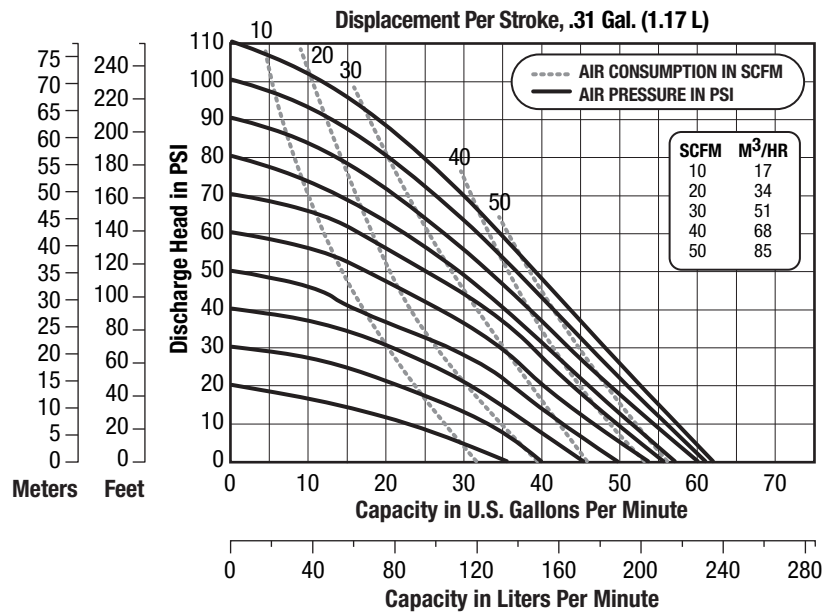
E4

Specifications

Flow Rate adjustable to . . . 0-70 gpm (265 lpm)
Port Size
 Inlet and Discharge 2" Tri-Clamp®
Air Inlet 0.50" NPT
Air Exhaust 0.75" NPT
Suction Lift . . . 15' Dry/25' Wet (4.57m/7.62m)
 PTFE 10' Dry/20' Wet (3.05m/6.09m)
Max. Particle Size (Dia.) 0.1875" (4.76mm)
Shipping Weights
 316 Stainless Steel 57 lbs (25.85 kg)



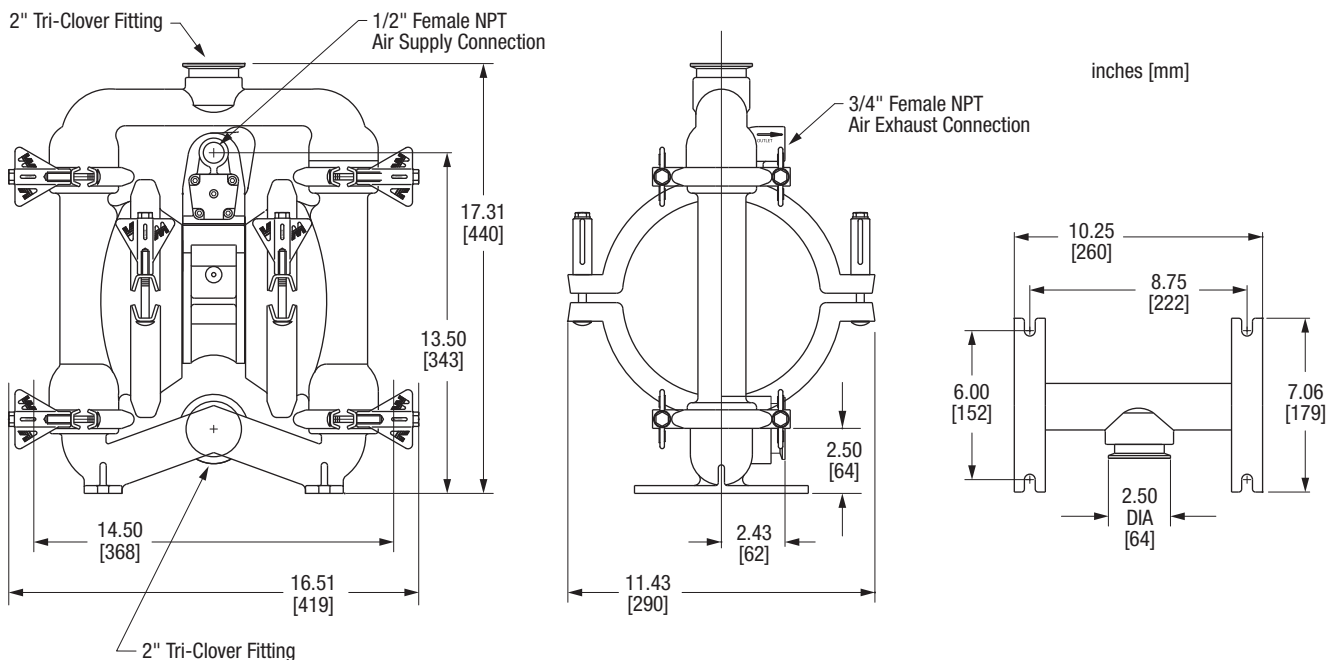
Performance



NOTE: For E4 pumps fitted with PTFE diaphragms, reduce water discharge figures by 20%. Suction lift is reduced to 10' (3.05m) dry and 20' (6.10m) wet.

CAUTION: Do not exceed 125 psig (8.5 bars) air supply or liquid pressure.

Dimensions



Consult factory for certified drawings.

E4

1-1/2" Sanitary Pump

3A Certified Models Available with Versa-Sense™ II Leak Detection System

Specifications

Flow Rate adjustable to . . . 0-60 gpm (227 lpm)**Port Size**

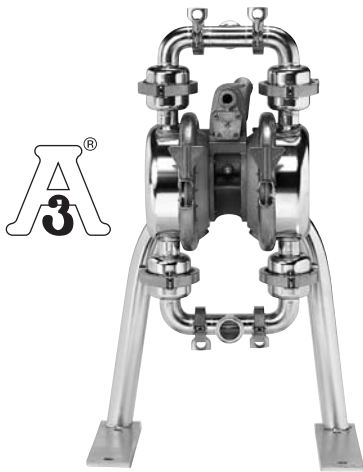
Inlet and Discharge 1.5" Tri-Clamp®

Air Inlet 0.50" NPT**Air Exhaust** 0.75" NPT**Suction Lift**

PTFE 10' Dry/20' Wet (3.05m/6.10m)

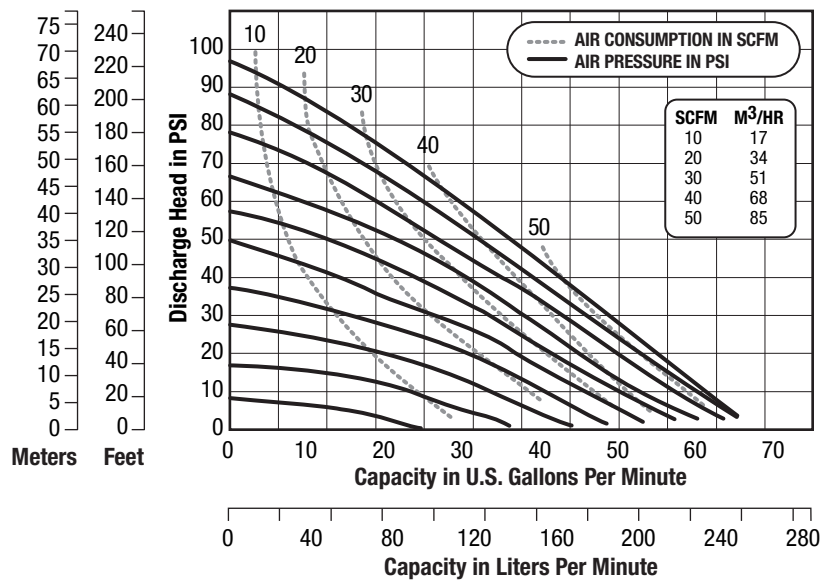
Max. Particle Size (Dia.) 0.375" (9.53mm)**Surface Finish** . . 32 micro-inch (0.8 micrometer)**Shipping Weight**

316 Stainless Steel 75 lbs (34.09 kg)



Performance

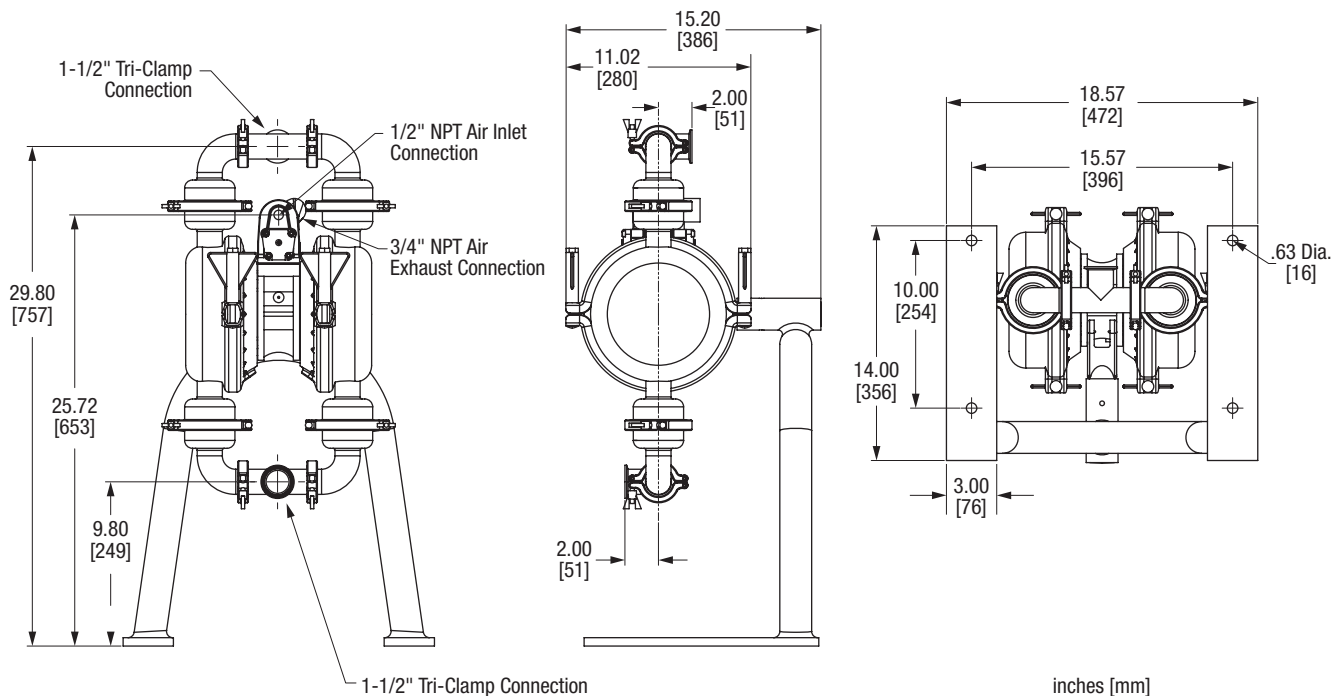
Displacement Per Stroke, 0.31 Gal. (0.11 L)



NOTE: For E4 pumps fitted with PTFE diaphragms, reduce water discharge figures by 20%.
Suction lift is reduced to 10' (3.05m) dry and 20' (6.10m) wet.

CAUTION: Do not exceed 125 psig (8.5 bars) air supply or liquid pressure.

Dimensions



Consult factory for certified drawings.

2" Clamped Metallic Pumps

Screen Mount Available for Aluminum Model, Stainless Steel Air Section Available

E2

Specifications

Flow Rate adjustable to . . . 0-155 gpm (586 lpm)

Port Size

Inlet and Discharge 2.0" NPT (BSP)

Air Inlet 0.50" NPT

Air Exhaust 0.75" NPT

Suction Lift . . . 20' Dry/25' Wet (6.10m/7.62m)

PTFE 10' Dry/20' Wet (3.05m/6.10m)

Max. Particle Size (Dia.) 0.25"(6.35mm)

Shipping Weights

Aluminum 70 lbs (31.75 kg)

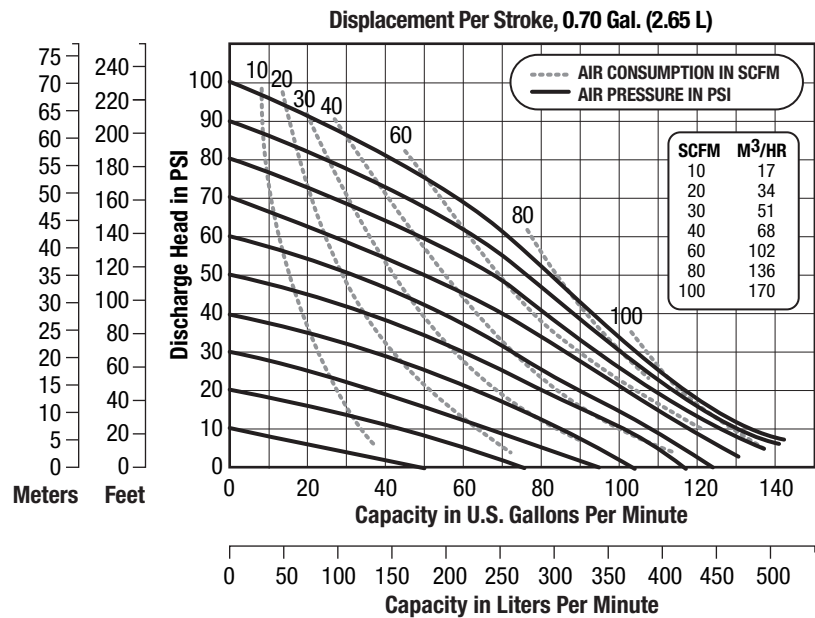
Cast Iron 115 lbs (52.16 kg)

316 Stainless Steel 115 lbs (52.16 kg)

Hastelloy C 125 lbs (56.70 kg)



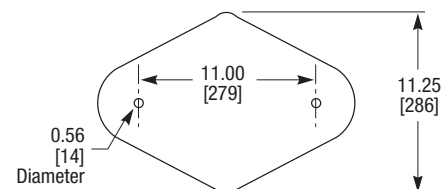
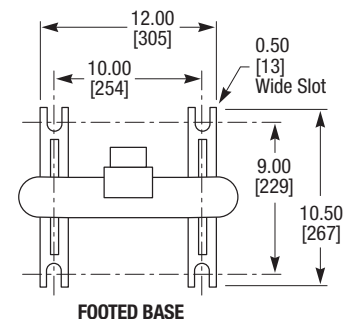
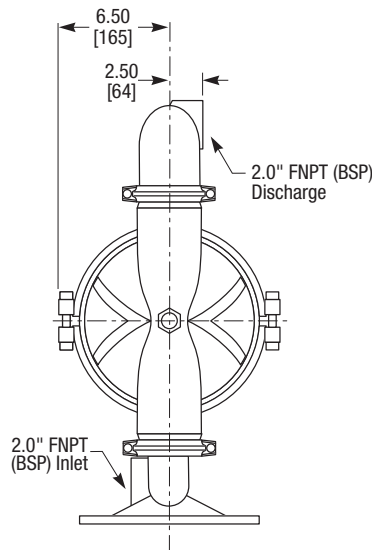
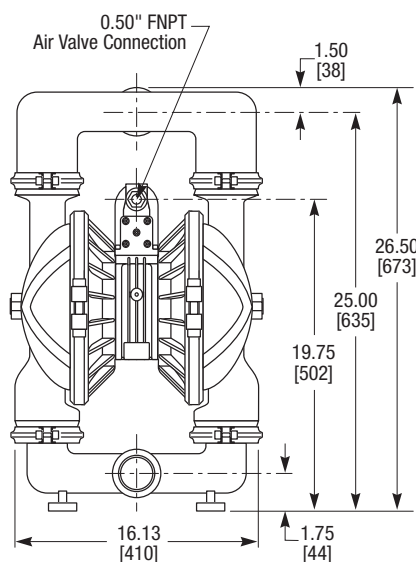
Performance



NOTE: For E2 pumps fitted with PTFE diaphragms, reduce water discharge figures by 20%. Suction lift is reduced to 10' (3.05m) dry and 20' (6.10m) wet.

CAUTION: Do not exceed 125 psig (8.5 bars) air supply or liquid pressure.

Dimensions



inches [mm]

OPTIONAL SCREEN BASE
(Aluminum Pumps Only)

Consult factory for certified drawings.

E2

2" Bolted Metallic Pumps

Standard Vertical Discharge — Horizontal Discharge Available

Specifications

Flow Rate adjustable to . . . 0-155 gpm (586 lpm)**Port Size**

Inlet and Discharge 2.0" ANSI,

. 150 lb class (DIN 50)

Air Inlet 0.50" NPT**Air Exhaust** 0.75" NPT**Suction Lift** . . . 20' Dry/25' Wet (6.09m/7.62m)

PTFE 10' Dry/20' Wet (3.05m/6.09m)

Max. Particle Size (Dia.) 0.25" (6.35mm)**Shipping Weight**

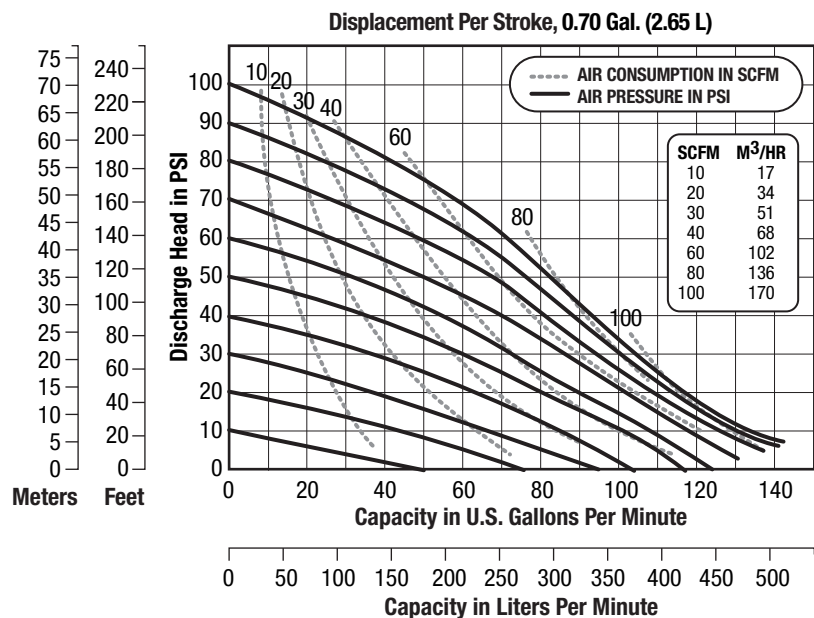
316 Stainless Steel 120 lbs (54.43 kg)

Hastelloy C 120 lbs (54.43 kg)

Cast Iron 120 lbs (54.43 kg)



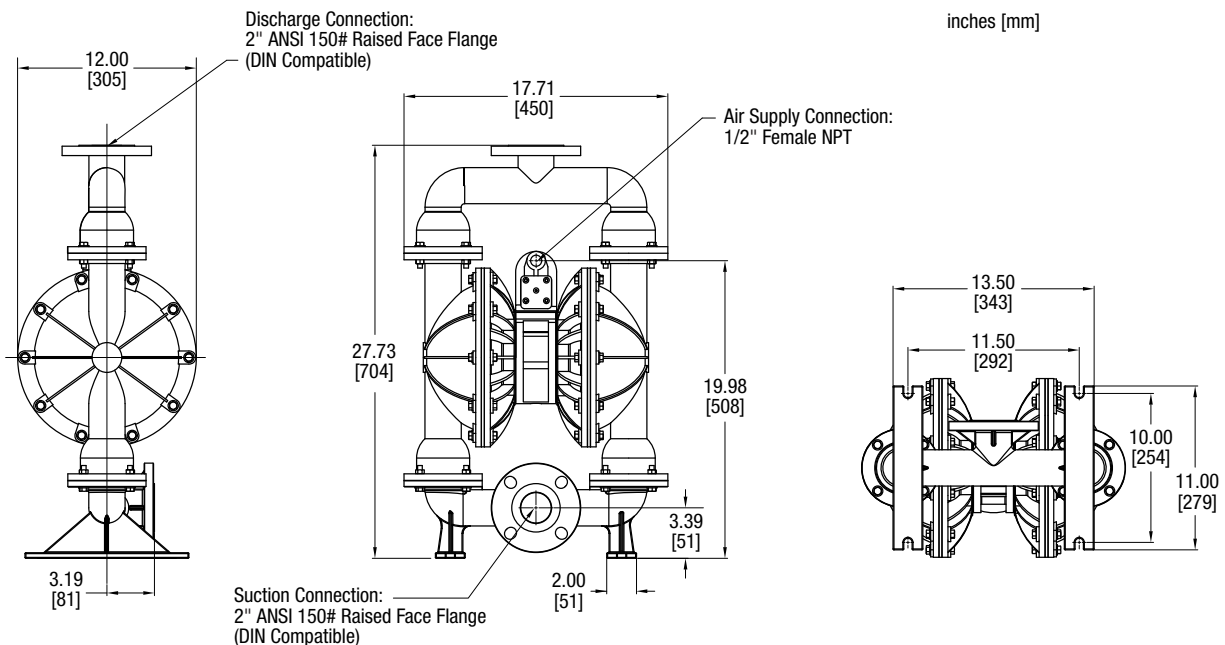
Performance



NOTE: For E2 pumps fitted with PTFE diaphragms, reduce water discharge figures by 20%.
Suction lift is reduced to 10' (3.05m) dry and 20' (6.10m) wet.

CAUTION: Do not exceed 125 psig (8.5 bars) air supply or liquid pressure.

Dimensions



Consult factory for certified drawings.

2" Bolted Aluminum Pumps

E2

Specifications

Flow Rate adjustable to . . . 0-174 gpm (658 lpm)

Port Size

Inlet 2.0" NPT (BSP)

Discharge 2.0" NPT (BSP)

Air Inlet 0.50" NPT

Air Exhaust 0.75" NPT

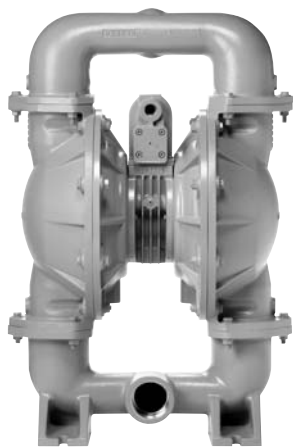
Suction Lift . . . 20' Dry/25' Wet (6.10m/7.62m)

PTFE 10' Dry/20' Wet (3.05m/6.10m)

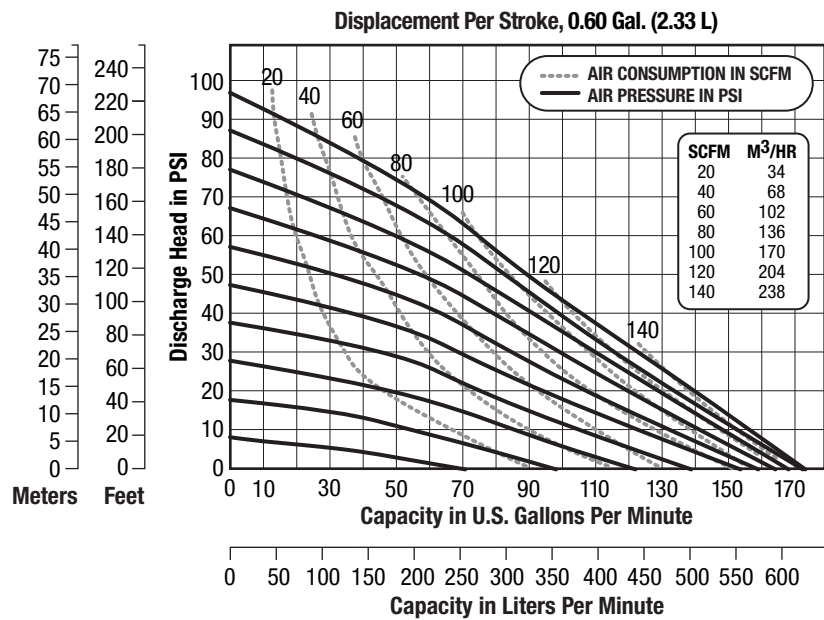
Max. Particle Size (Dia.) 0.43"(11mm)

Shipping Weight

Aluminum 74 lbs (33.34 kg)



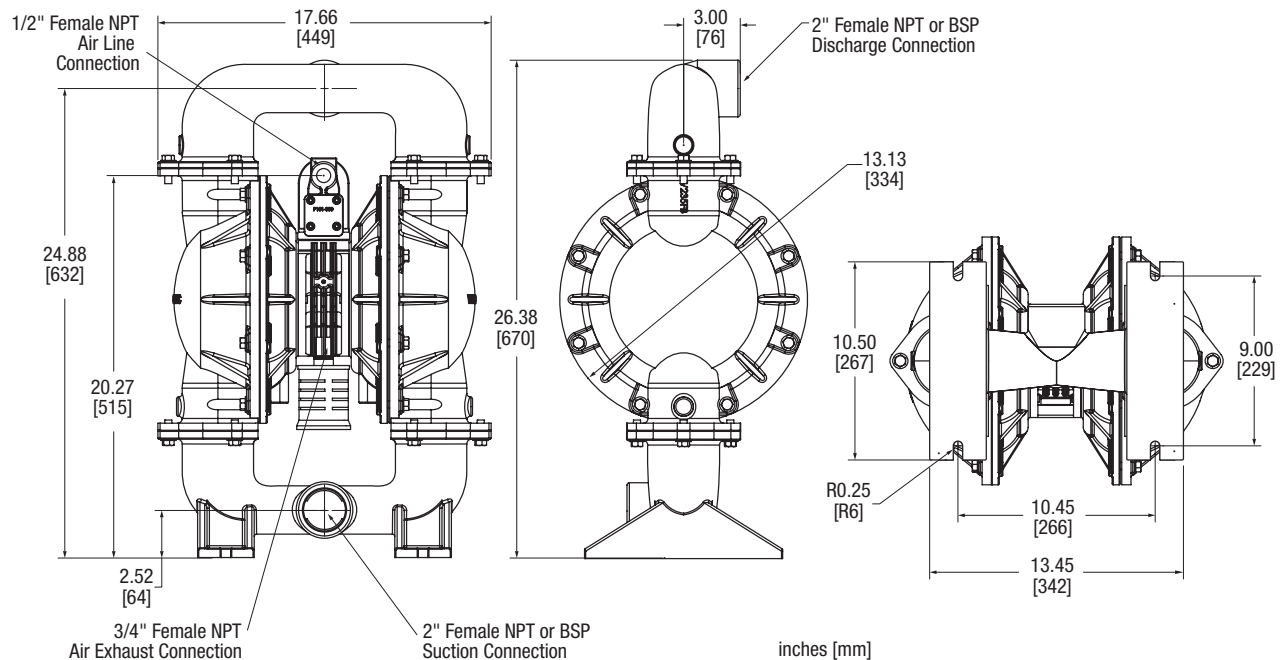
Performance



NOTE: For E2AL pumps fitted with PTFE diaphragms, reduce water discharge figures by 20%. Suction lift is reduced to 10' (3.05m) dry and 20' (6.10m) wet.

CAUTION: Do not exceed 125 psig (8.5 bars) air supply or liquid pressure.

Dimensions



Consult factory for certified drawings.

Specifications

Flow Rate adjustable to . . . 0-69 gpm (261 lpm)

Port Size

Inlet and Discharge 2.0" ANSI,
 300 lb class (DIN 50)

Air Inlet 0.50" NPT

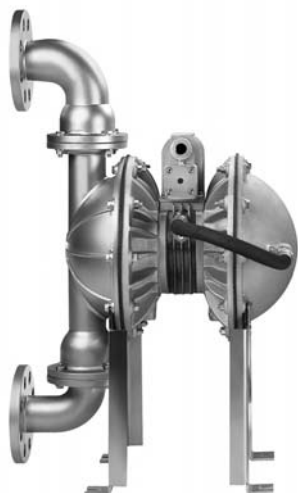
Air Exhaust 1.0" NPT

Suction Lift . . . 20' Dry/25' Wet (6.10m/7.62m)

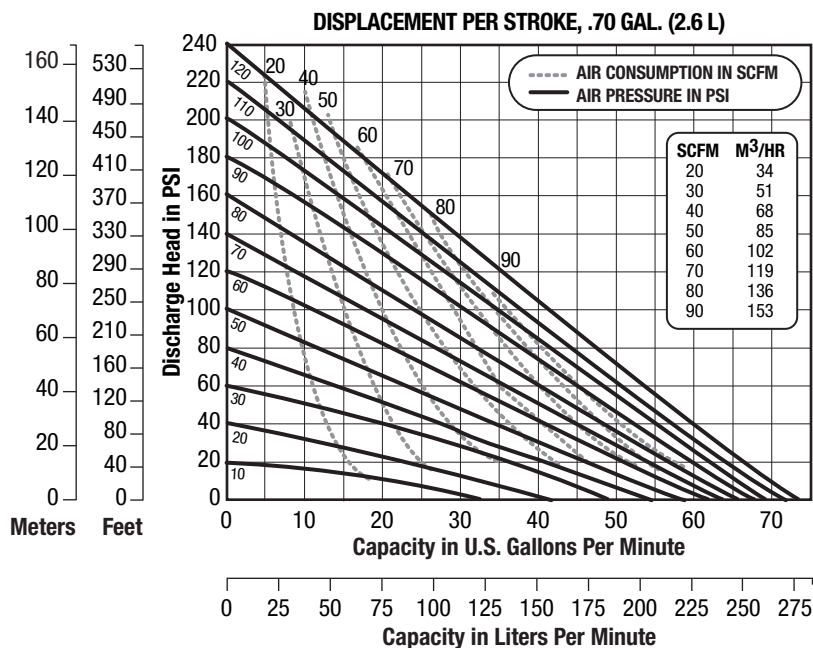
Max. Particle Size (Dia.) 0.25" (6.35mm)

Shipping Weight

316 Stainless Steel 91 lbs (41.28 kg)

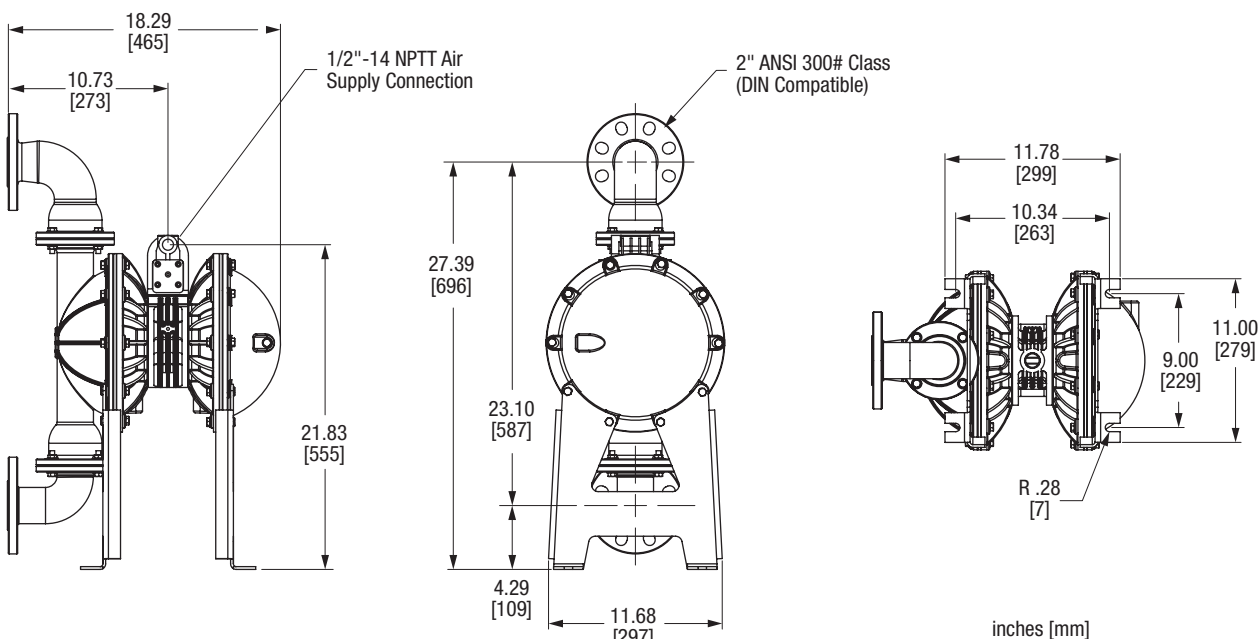


Performance



CAUTION: Do not exceed 100 psig (6.9 bars) air supply or liquid pressure.

Dimensions



Consult factory for certified drawings.

2" Flap Valve Pumps

with Top Inlet and Bottom Discharge

E2

Specifications

Flow Rate adjustable to . . . 0-180 gpm (681 lpm)

Port Size

Inlet and Discharge 2.0" Male NPT (BSP)

Air Inlet 0.50" NPT

Air Exhaust 0.75" NPT

Suction Lift . . . 10' Dry/10' Wet (3.05m/3.05m)

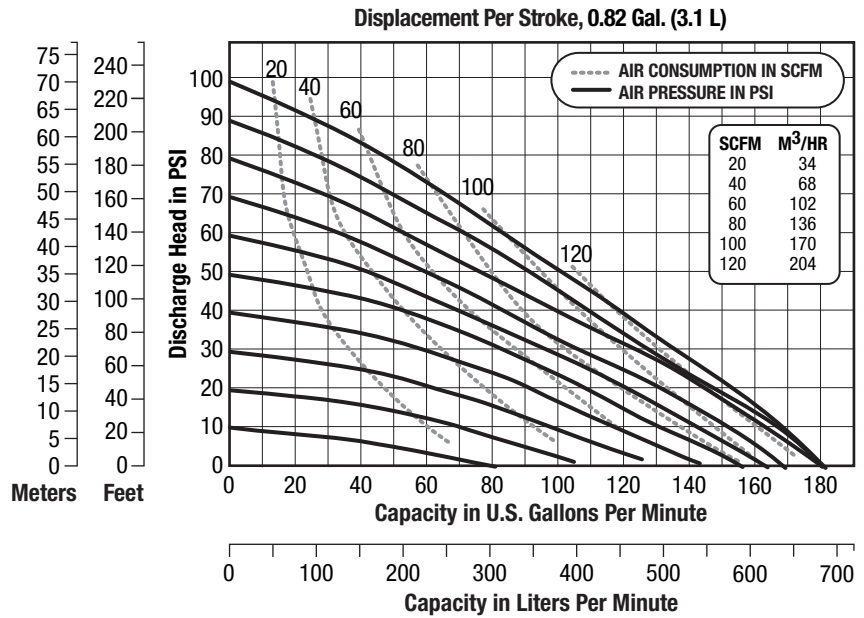
Max. Particle Size (Dia.) 1.125"(28.57mm)

Shipping Weight

Aluminum 88 lbs (39.92 kg)



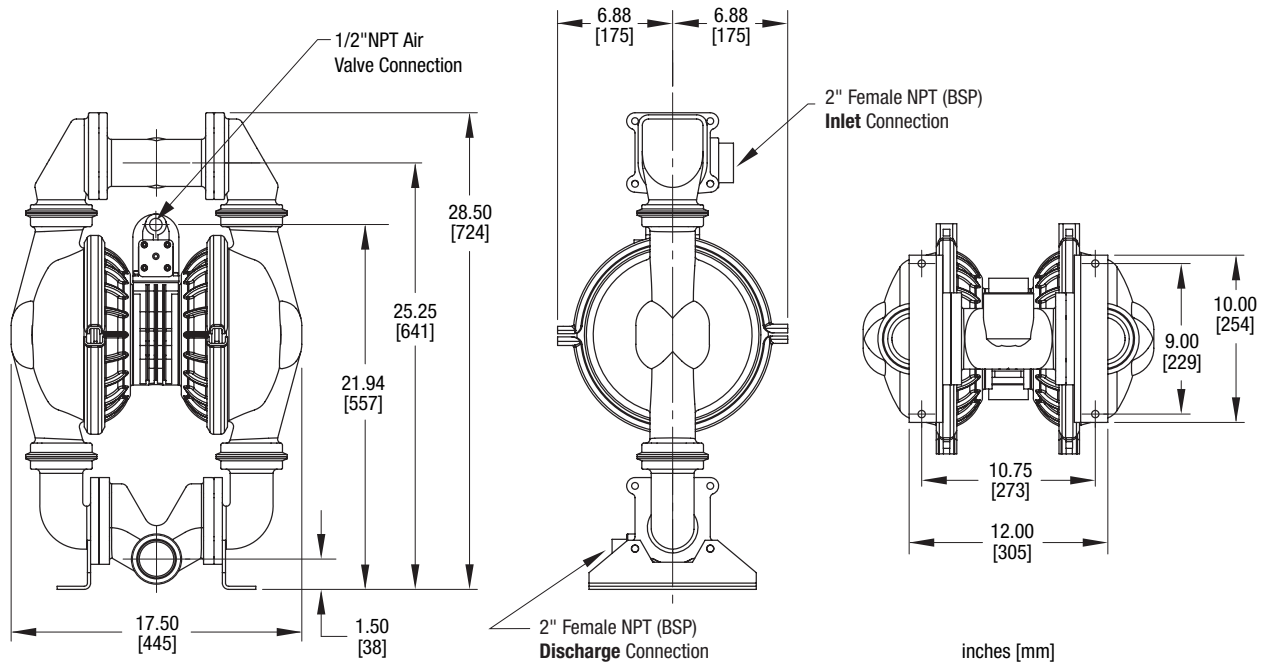
Performance



NOTE: For E2FV pumps fitted with PTFE diaphragms, reduce water discharge figures by 20%. Suction lift is reduced to 10' (3.05m) dry and 20' (6.10m) wet.

CAUTION: Do not exceed 125 psig (8.5 bars) air supply or liquid pressure.

Dimensions



Consult factory for certified drawings.

Specifications

Flow Rate adjustable to . . . 0-155 gpm (586 lpm)

Port Size

Inlet and Discharge 2.0" ANSI,
 150 Class (DIN 50)

Air Inlet 0.50" NPT

Air Exhaust 0.75" NPT

Suction Lift . . . 20' Dry/25' Wet (6.10m/7.62m)

PTFE 10' Dry/20' Wet (3.05m/6.10m)

Max. Particle Size (Dia.) 0.25" (6.35mm)

Shipping Weights

Plastic w/Aluminum Center . . . 72 lbs (32.68 kg)

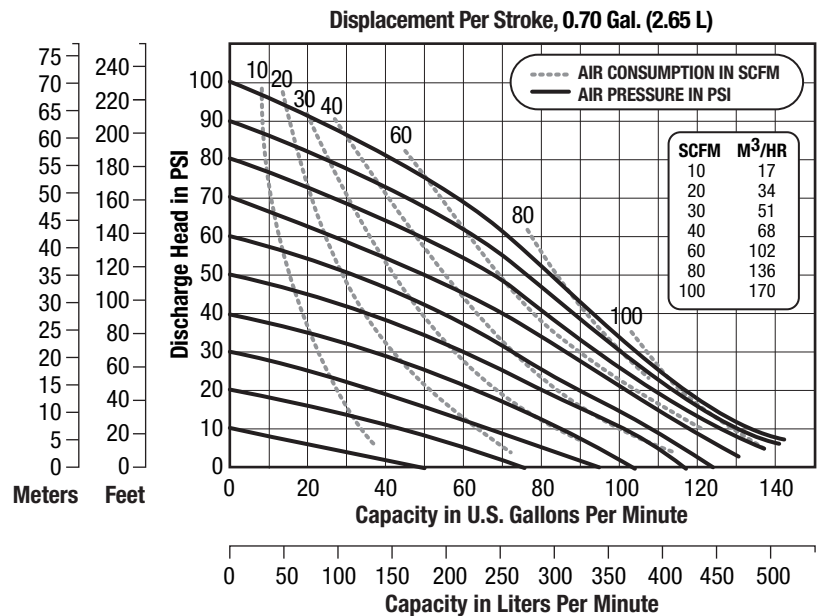
Plastic w/Stainless Center . . . 106 lbs (48.12 kg)

Kynar® w/Aluminum Center . . . 98 lbs (44.49 kg)

Kynar® w/Stainless Center . . . 132 lbs (59.92 kg)



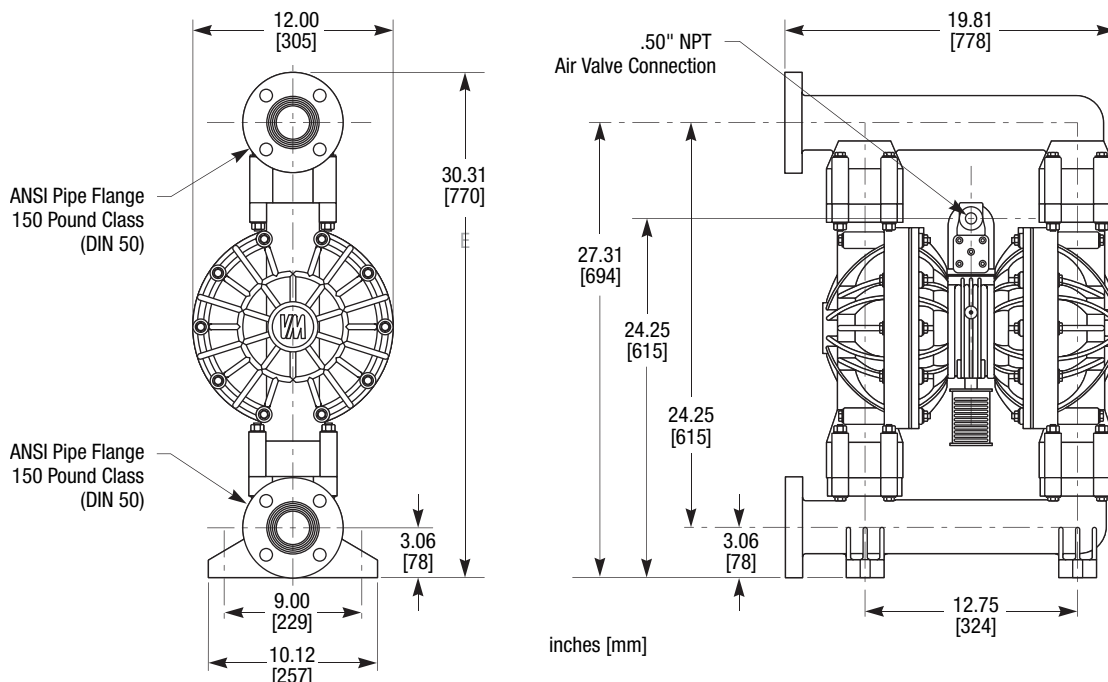
Performance



NOTE: For E2P pumps fitted with PTFE diaphragms, reduce water discharge figures by 20%. Suction lift is reduced to 10' (3.05m) dry and 20' (6.10m) wet.

CAUTION: Do not exceed 100 psig (6.9 bars) air supply or liquid pressure.

Dimensions



Consult factory for certified drawings.

2" Bolted Plastic Pumps

Optional Center Porting with Adjustable Inlet/Discharge

E2

Specifications

Flow Rate adjustable to . . . 0-155 gpm (586 lpm)

Port Size

Inlet and Discharge 2.0" ANSI,
 150 Class (DIN 50)

Air Inlet 0.50" NPT

Air Exhaust 0.75" NPT

Suction Lift 20' Dry/25' Wet (6.10m/7.62m)

PTFE 10' Dry/20' Wet (3.05m/6.10m)

Max. Particle Size (Dia.) 0.25" (6.35mm)

Shipping Weights

Plastic w/Aluminum Center . . . 76 lbs (34.56 kg)

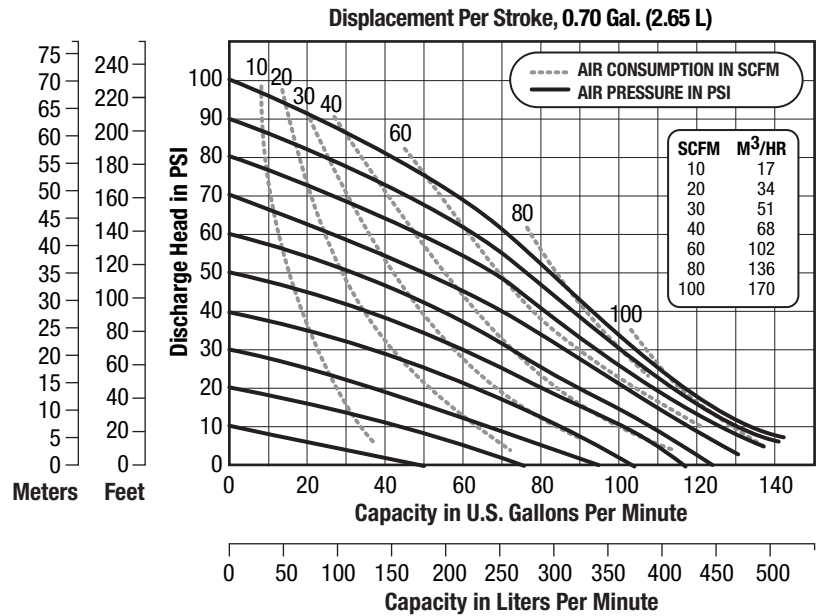
Plastic w/Stainless Center . . . 110 lbs (49.99 kg)

Kynar® w/Aluminum Center . . 102 lbs (46.36 kg)

Kynar® w/Stainless Center . . . 136 lbs (61.78 kg)



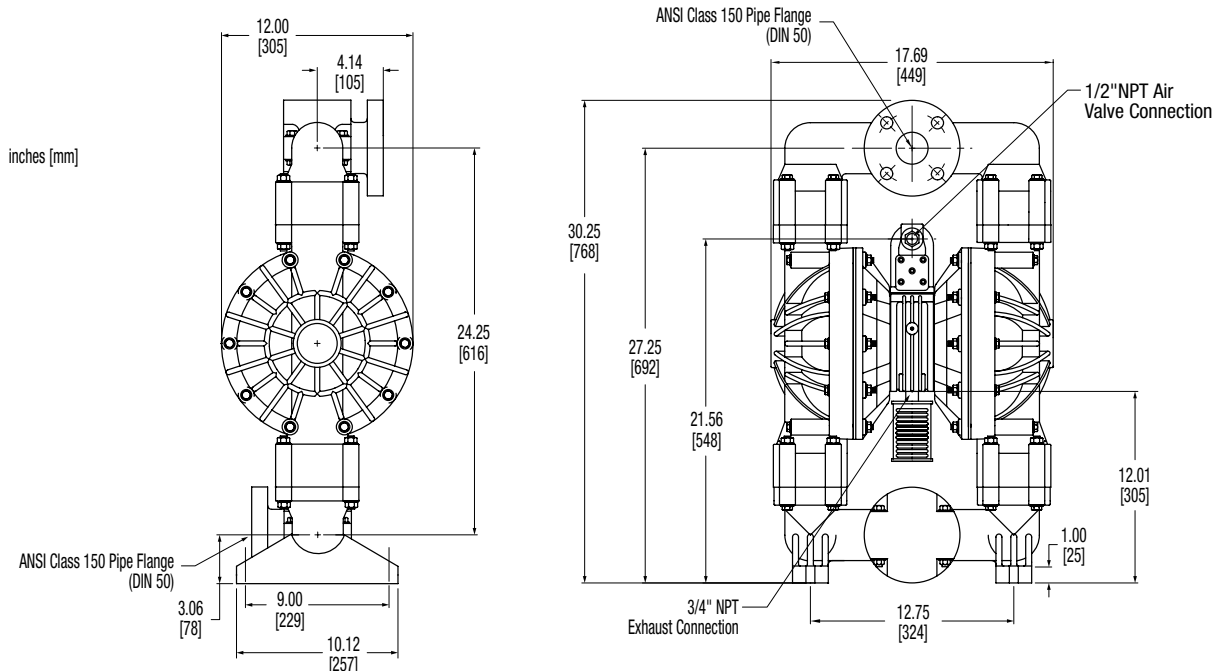
Performance



NOTE: For E2P pumps fitted with PTFE diaphragms, reduce water discharge figures by 20%. Suction lift is reduced to 10' (3.05m) dry and 20' (6.10m) wet.

CAUTION: Do not exceed 100 psig (6.9 bars) air supply or liquid pressure.

Dimensions



Consult factory for certified drawings.

E2

2" Food Processing Pump

Stainless Steel Air Section Available

Specifications

Flow Rate adjustable to . . . 0-155 gpm (586 lpm)**Port Size**

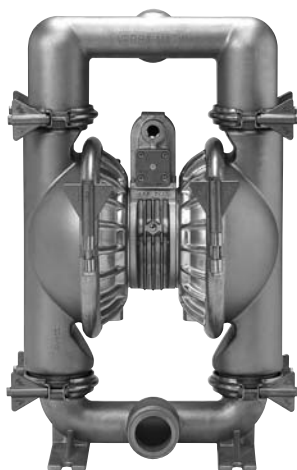
Inlet and Discharge 2.5" Tri-Clamp®

Air Inlet 0.50" NPT**Air Exhaust** 0.75" NPT**Suction Lift** . . . 20' Dry/25' Wet (6.10m/7.62m)

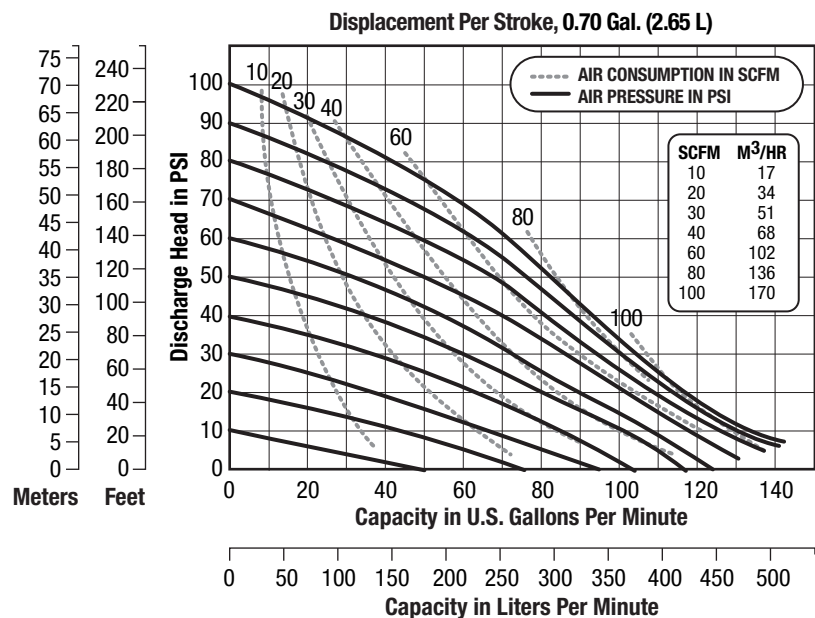
PTFE 10' Dry/20' Wet (3.05m/6.10m)

Max. Particle Size (Dia.) 0.25"(6.35mm)**Shipping Weights**

316 Stainless Steel 115 lbs (52.16 kg)



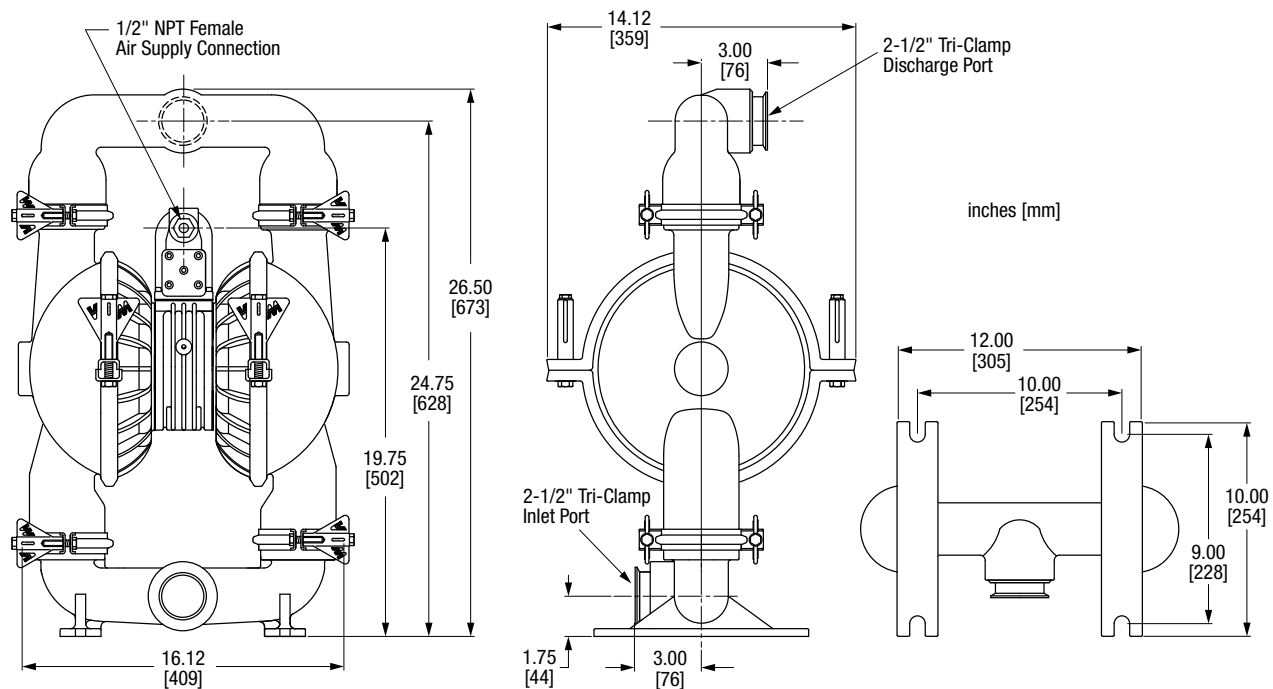
Performance



NOTE: For E2 pumps fitted with PTFE diaphragms, reduce water discharge figures by 20%.
Suction lift is reduced to 10' (3.05m) dry and 20' (6.10m) wet.

CAUTION: Do not exceed 125 psig (8.5 bars) air supply or liquid pressure.

Dimensions



Consult factory for certified drawings.

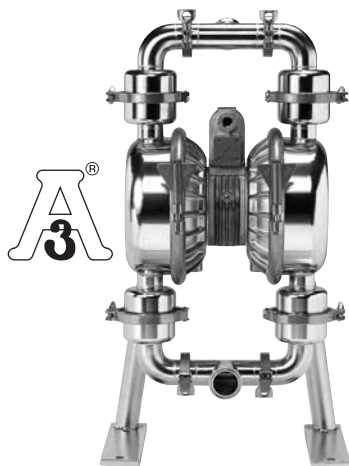
2" Sanitary Pump

3A Certified Models Available with Versa-Sense™ II Leak Detection System

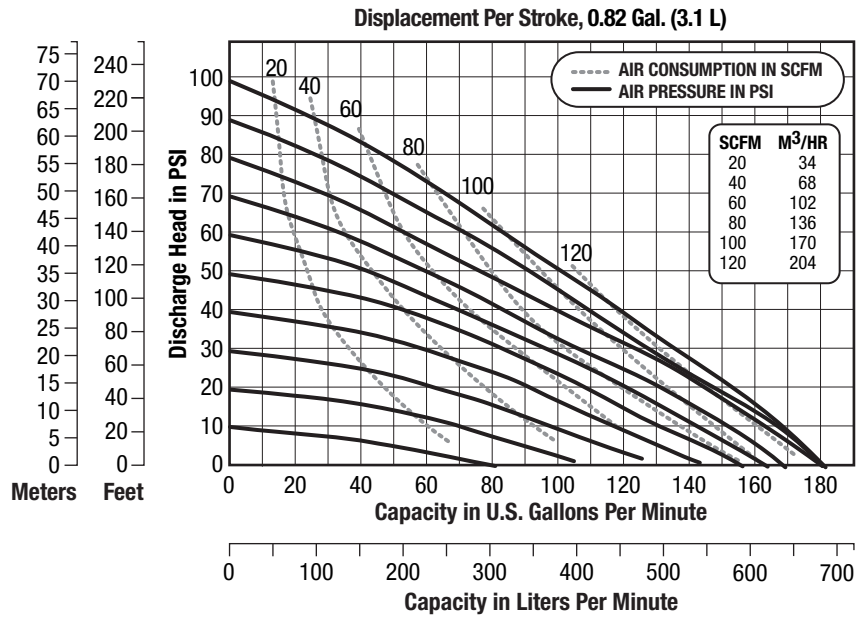
E2

Specifications

Flow Rate adjustable to . . . 0-180 gpm (680 lpm)
PORT SIZE
 Inlet and Discharge 2.0" Tri-Clamp®
Air Inlet 0.50" NPT
Air Exhaust 0.75" NPT
Suction lift
 PTFE 10' Dry/20' Wet (3.05m/6.10m)
Max. particle size (Dia.) 0.625" (15.88mm)
Surface Finish . . . 32 micro-inch (0.8 micrometer)
Shipping Weight
 316 Stainless Steel 125 lbs (56.70 kg)



Performance

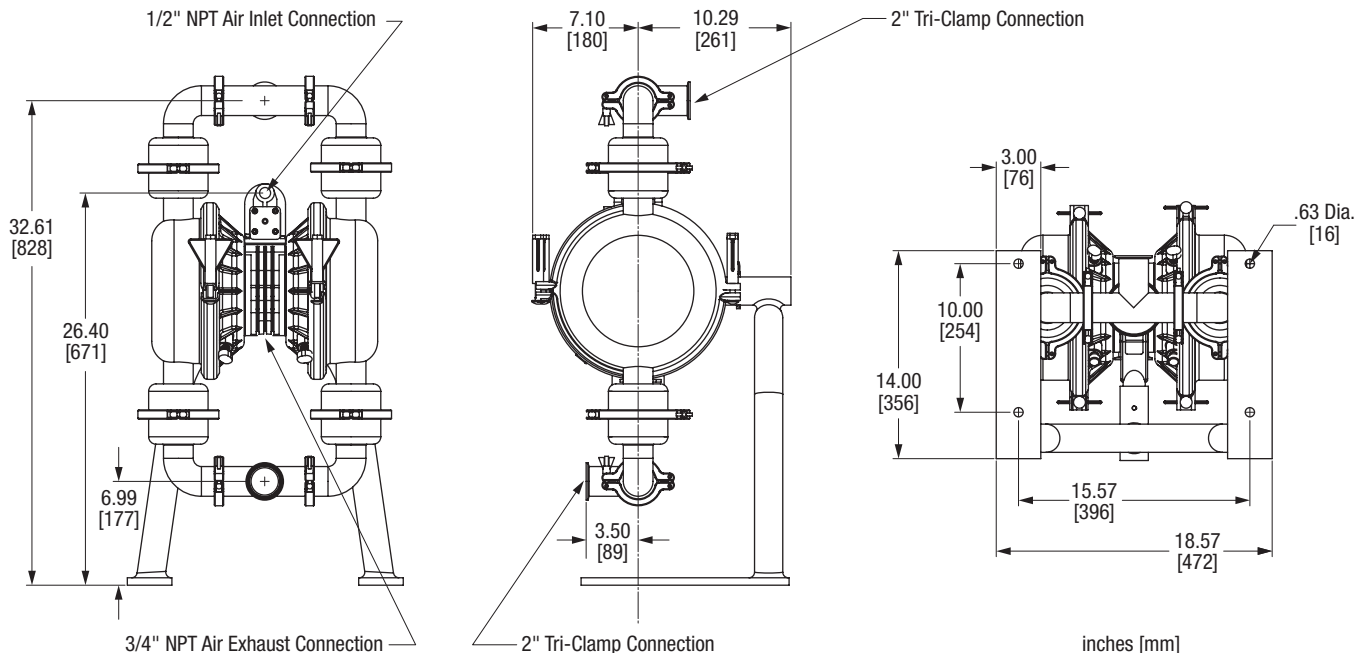


NOTE: For E2 pumps fitted with PTFE diaphragms, reduce water discharge figures by 20%. Suction lift is reduced to 10' (3.05m) dry and 20' (6.10m) wet.

CAUTION: Do not exceed 125 psig (8.5 bars) air supply or liquid pressure.

27

Dimensions



Consult factory for certified drawings.

3" Clamped Metallic Pumps

Screen Mount Available for Aluminum Model, Stainless Steel Air Section Available

Specifications

Flow Rate adjustable to . . . 0-260 gpm (984 lpm)

Port Size

Inlet and Discharge 3.0" NPT (BSP)

Air Inlet 0.5" NPT

Air Exhaust 1.0" NPT

Suction Lift . . . 20' Dry/25' Wet (6.10m/7.62m)

PTFE 10' Dry/20' Wet (3.05m/6.10m)

Max. Particle Size (Diam.) 0.375"(9.52mm)

Shipping Weights

Aluminum 115 lbs (52.16 kg)

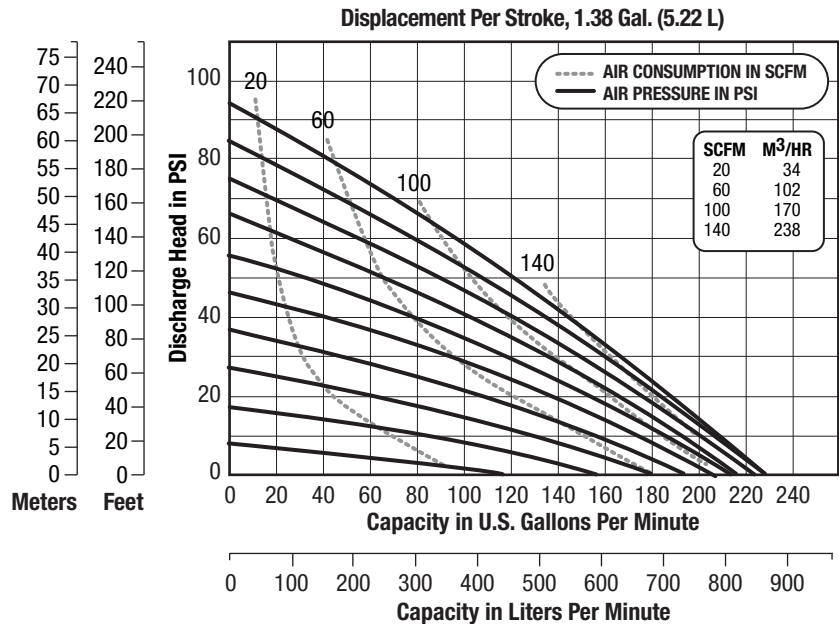
Cast Iron 210 lbs (95.25 kg)

316 Stainless Steel 210 lbs (95.25 kg)

Hastelloy C 220 lbs (99.79 kg)



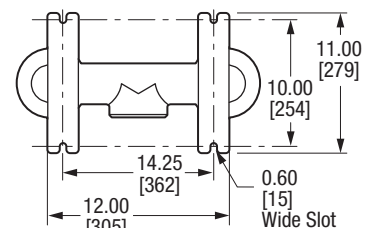
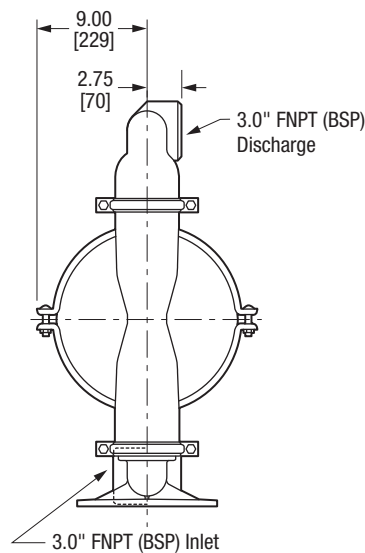
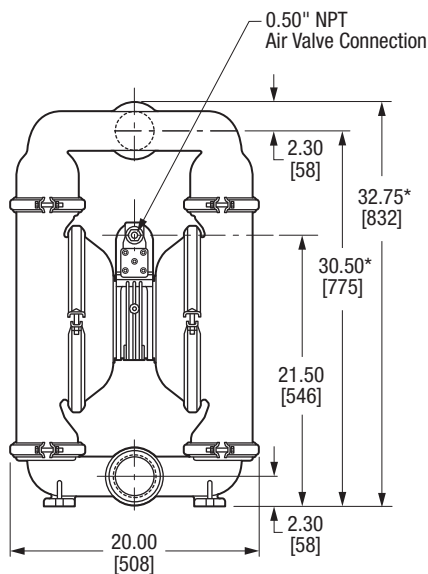
Performance



NOTE: For E3 pumps fitted with PTFE diaphragms, reduce water discharge figures by 20%. Suction lift is reduced to 10' (3.05m) dry and 20' (6.10m) wet.

CAUTION: Do not exceed 125 psig (8.5 bars) air supply or liquid pressure.

Dimensions



inches [mm]

* Measurement is for Cast Iron pumps. Other materials of construction may be slightly smaller.

Consult factory for certified drawings.

3" Bolted Metallic Pumps

E3

Specifications

Flow Rate adjustable to . . . 0-230 gpm (870 lpm)

Port Size

Inlet and Discharge 3.0" ANSI,
 150 lb class (DIN 80)

Air Inlet 0.50" NPT

Air Exhaust 1.0" NPT

Suction Lift . . . 20' Dry/25' Wet (6.10m/7.62m)

PTFE 10' Dry/20' Wet (3.05m/6.10m)

Max. Particle Size (Dia.) 0.75"(19.1mm)

Shipping Weights

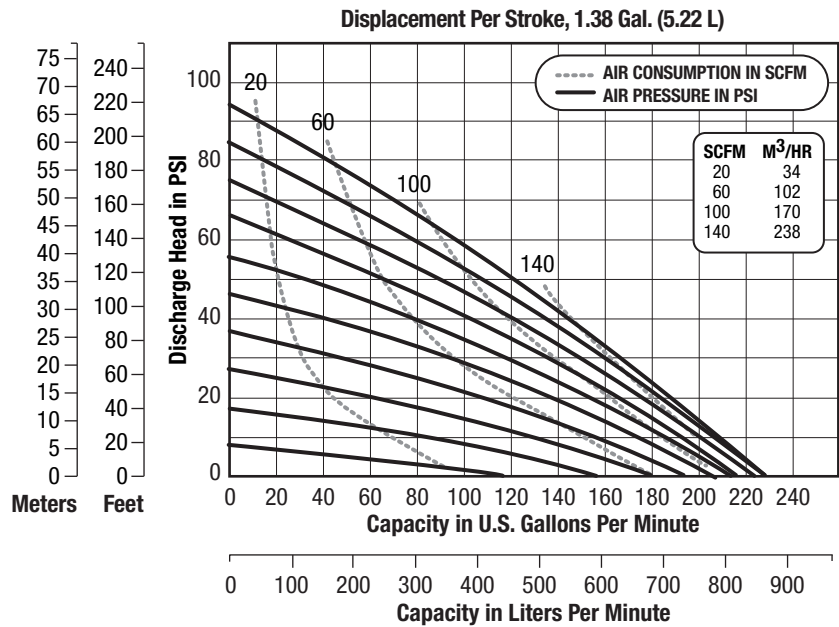
Aluminum 150 lbs (68.04 kg)

316 Stainless Steel 250 lbs (113.40 kg)

Hastelloy C 275 lbs (124.74 kg)



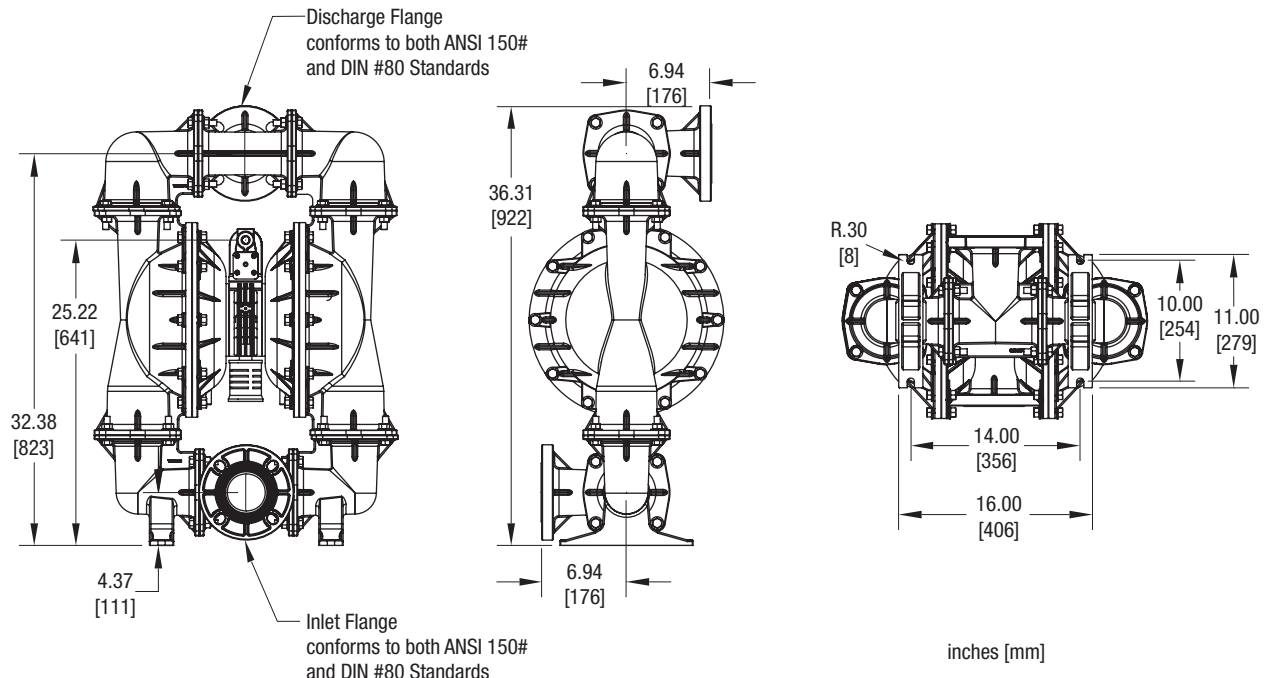
Performance



NOTE: For E3 pumps fitted with PTFE diaphragms, reduce water discharge figures by 20%.
 Suction lift is reduced to 10' (3.05m) dry and 20' (6.10m) wet.

CAUTION: Do not exceed 125 psig (8.5 bars) air supply or liquid pressure.

Dimensions



Consult factory for certified drawings.

Specifications

Flow Rate adjustable to . . . 0-238 gpm (901 lpm)

Port Size

Inlet and Discharge . . . 3.0" ANSI or DIN 80 Flange

Air Inlet 0.75" NPTF

Air Exhaust 1.00" NPTF

Suction Lift 20' Dry/25' Wet (6.10m/7.62m)

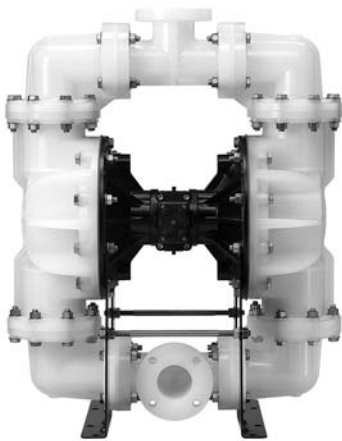
PTFE 10' Dry/20' Wet (3.05m/6.10m)

Max. Particle Size (Dia.) 0.71" (18mm)

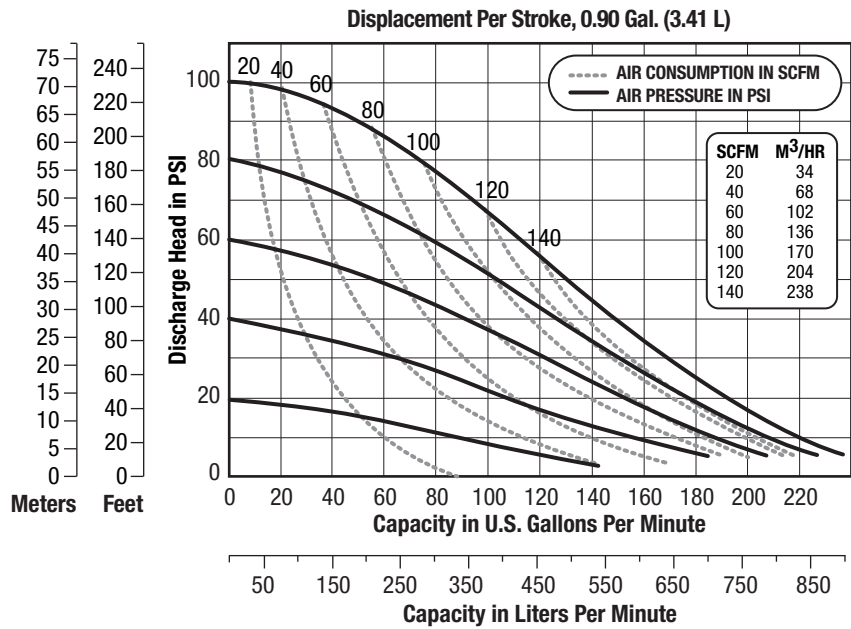
Shipping Weights

Polypropylene 231 lbs (104.78 kg)

PVDF 315 lbs (142.88 kg)



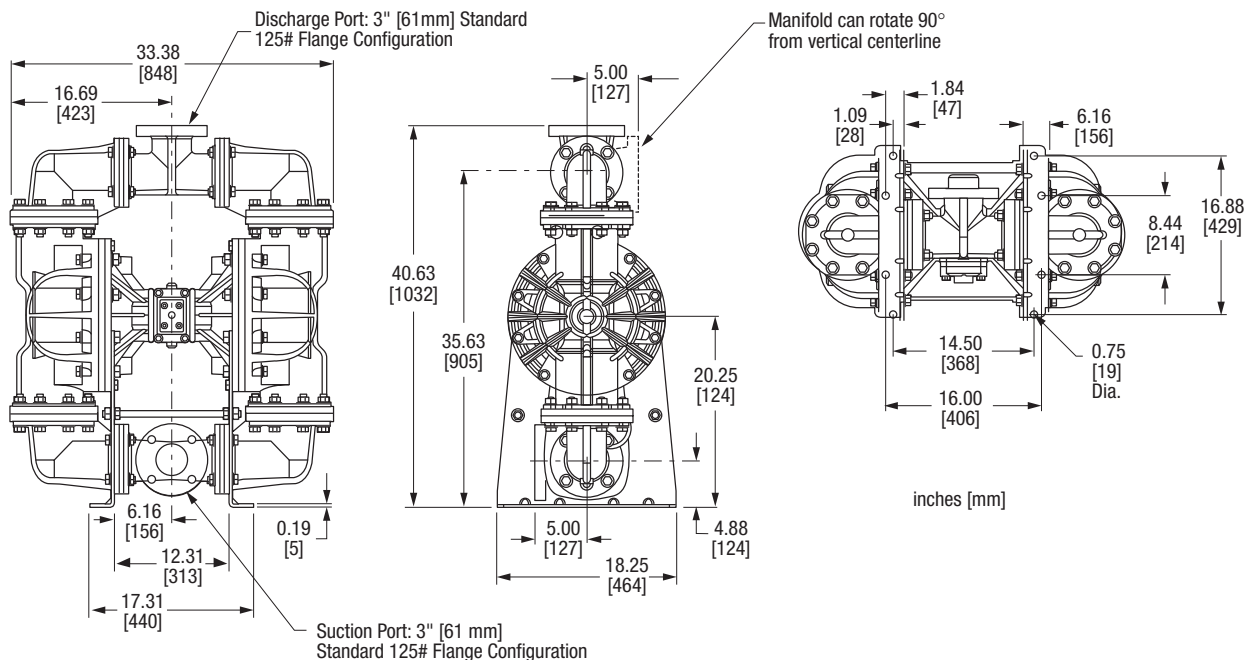
Performance



NOTE: For E3P pumps fitted with PTFE diaphragms, reduce water discharge figures by 20%. Suction lift is reduced to 10' (3.05m) dry and 20' (6.10m) wet.

CAUTION: Do not exceed 100 psig (6.9 bars) air supply or liquid pressure.

Dimensions



Consult factory for certified drawings.

3" Food Processing Pump

Stainless Steel Air Section Available

E3

Specifications

Flow Rate adjustable to . . . 0-260 gpm (984 lpm)

Port Size

Inlet and Discharge 3.0" Tri-Clamp®

Air Inlet 0.5" NPT

Air Exhaust 1.0" NPT

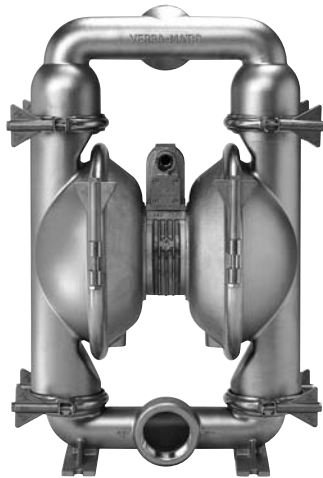
Suction Lift . . . 20' Dry/25' Wet (6.10m/7.62m)

PTFE 10' Dry/20' Wet (3.05m/6.10m)

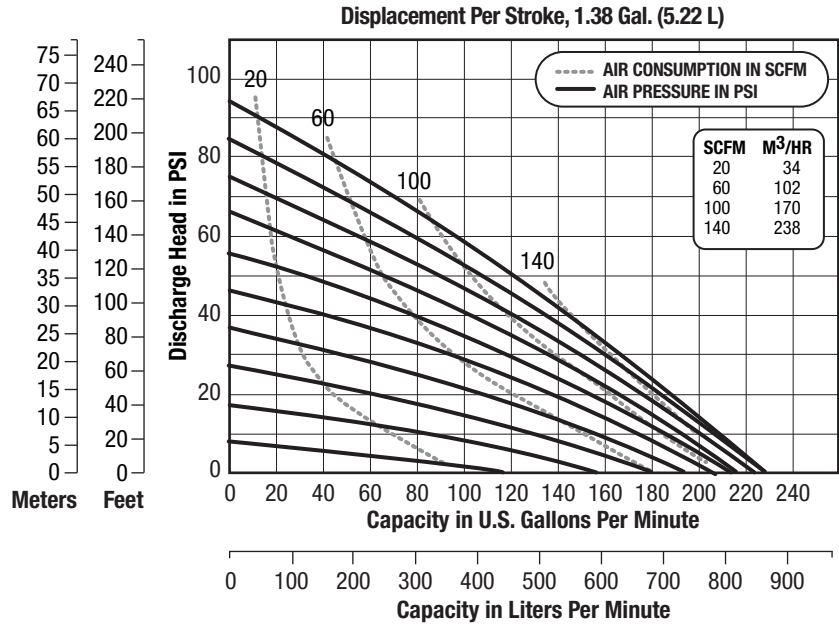
Max. Particle Size (Diam.) 0.375" (9.52mm)

Shipping Weights

316 Stainless Steel 210 lbs (95.25 kg)



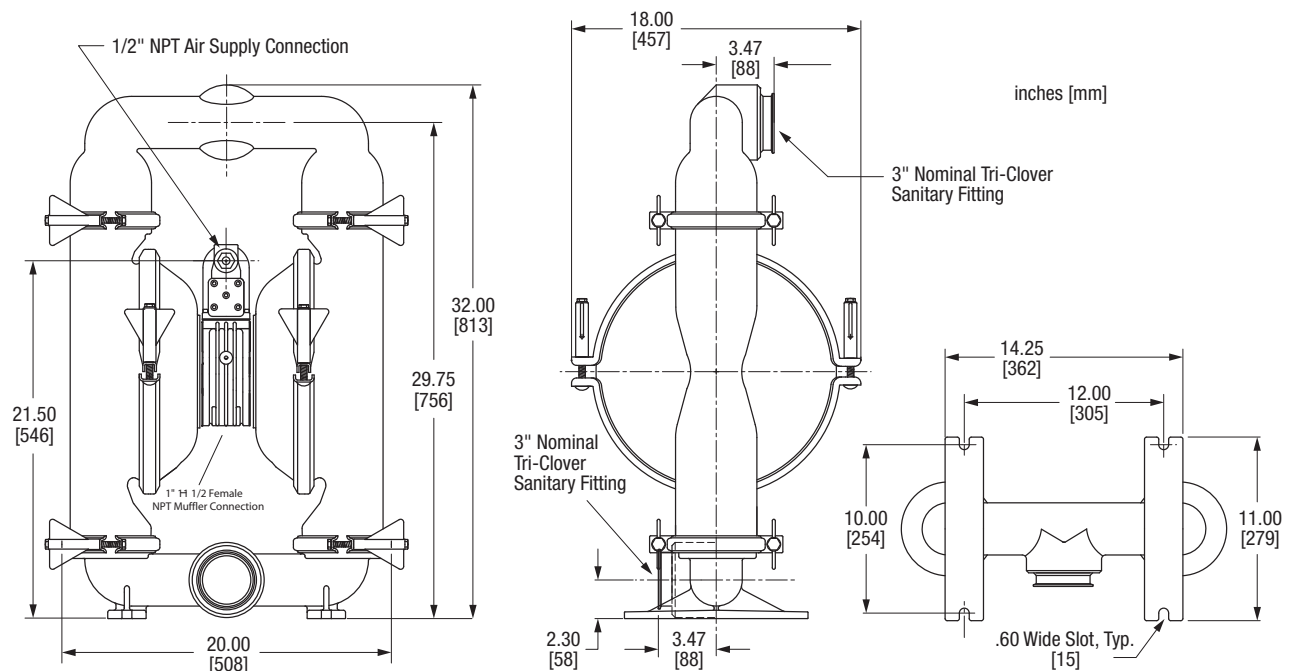
Performance



NOTE: For E3 pumps fitted with PTFE diaphragms, reduce water discharge figures by 20%. Suction lift is reduced to 10' (3.05m) dry and 20' (6.10m) wet.

CAUTION: Do not exceed 125 psig (8.5 bars) air supply or liquid pressure.

Dimensions



Consult factory for certified drawings.

Porta-Matic™

Battery-Powered Portable Pump

- Runs off any 12-volt truck/auto battery
- Fully submersible
- Fits in openings as small as 10" diameter
- Weighs just 33 lbs.
- 30 foot cord
- Whisper-quiet
- Needs no suction hose, engine cranking or gas cans
- Remote waterproof controller for simple, safe operation
- Low 30-amp draw for an hour (average) of operation without restarting engine
- Available with both 1-1/2" NPT or BSPT (tapered thread) female connections
- Self-lubricating shaft seal, bearing lubricated for life

Specifications

Model Number SPA15
Maximum Flow 43 gpm (163 lpm)
Maximum Head Pressure 25' (7.6 m)
Fluid Outlet 1.5" NPT or BSPT (female)
Weight 33 lbs (14.37 kg)



AP50

Air-Driven High-Pressure Pump

- Fully submersible
- Available in 2"
- Compact and weighs 71 lbs.
- Fits in openings as small as 16" diameter
- Low noise levels
- Long service life
- Easy maintenance
- Convenient carrying handle
- Can run dry without damage
- Sealed construction
- Safe in hazardous areas
- Integral baseplate/strainer
- Open impeller for slurry and solids

Specifications

Model Number AP50/2
Maximum Flow 125 gpm (473 lpm)
Maximum Discharge Pressure 48 psi (3.3 bar)
Max. Solid Particle Size 0.25" (6 mm)
Air Inlet 0.75" NPT or BSP (male)
Exhaust Outlet 1.0" NPT or BSP (female)
Fluid Discharge 2.0" NPT or BSP (female)
Weight 71 lbs (32.21 kg)



SludgeMaster™

Air-Driven High-Flow Pump

- Fully submersible
- Weighs 59 lbs
- Won't choke on small trash
- Can run dry without damage
- Handles solids up to 1.5"
- Self-draining to prevent damage in subfreezing weather
- Fits in openings as small as 14" diameter
- Self-priming and continuous automatic lubricating
- Optional rock screen for 1/2" solids available
- Fool-proof design that handles abrasive substances with less wear
- Built for rough handling and long life on land, sea or offshore

Specifications

Model Number SMA3-A
Maximum Flow 300 gpm (1,140 lpm)
Maximum Discharge Pressure . 28 psi (2 bar)
Max. Solid Particle Size 1.5" (38.1 mm)
Air Inlet 0.50" NPT
Exhaust Outlet 0.75" NPT
Fluid Discharge 3.0" NPT (female)
Weight 59 lbs (26.76 kg)



Food Processing Pumps

Elima-Matic® food-processing pumps are built with FDA-compliant materials so they can be specified in applications requiring FDA approval. The innovative Elima-Matic® air valve system virtually eliminates icing, stalling and the need for lubrication. Elima-Matic FDA pumps are available in 1/2", 1", 1-1/2", 2" and 3" sizes with optional Versa-Sense™ leak detection system.



- Electro-polished, 316 stainless steel wetted sections
- Hytrel® and PTFE food-grade elastomers
- Tri-clamp connections and wing-nut clamp bands for quick disassembly/assembly
- Nickel-plated aluminum center sections
- Flow range up to 260 gal/min
- Pre-cast bosses for use with optional leak detectors

Certified ATEX Compliant Pumps

Versa-Matic® now offers a complete range of Elima-Matic® pumps that have been independently certified as compliant to the European ATEX 100A directive for explosive atmospheres. These pumps are available in sizes from 1/2" to 3", in a variety of materials of construction — including easily distinguishable black polypropylene — and with a wide selection of diaphragm choices to ensure the best compatibility for products pumped in volatile environments.



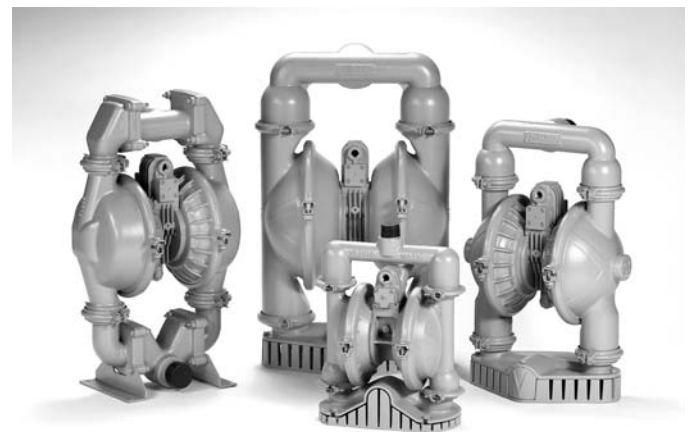
UL Listed Pumps

The UL Listed pumps have been tested and listed by Underwriters Laboratories for safe, spark-free flammable liquid transfer applications such as diesel fuel, kerosene, gasoline, aviation fuel, alcohol, and many others. They are available in a variety of different wet end materials of construction.



Solids Handling Pumps

Versa-Matic® screen mounted and flap valve pumps are designed to pump mediums which contain large solids. Used extensively in the construction and mining industries these pumps can handle semi-solids up to 1.125" (28.57mm) in diameter. The screen mounted bases screen the fluid to prevent larger solids from inhibiting the operation of the pump. They can be fully submerged for use in pits, sumps or other bodies of fluid (see instructions for submerged installation on page 3). These pumps can deliver flows up to 260 gpm (983 lpm) making quick work of many difficult applications.





Versa-Rugged VR™ Series

Versa-Matic's high quality fabric reinforced standard rubber diaphragms. Designed to reduce maintenance and repair costs. Interchangeable with most Wilden® pump models.



Industry First

Versa-Dome®

The simple, smooth dome shape eliminates complex angles — delivering the flex across the entire face of these diaphragms. The distribution of flex allows them to last up to 300% longer than standard diaphragms. Interchangeable with Wilden® pumps.



FDA Hytrel® Thermoplastic

FDA Hytrel® food grade diaphragms are approved for use with food and dairy mediums. FDA Hytrel® diaphragms are also excellent in abrasive product transfer applications.

34



Industry First

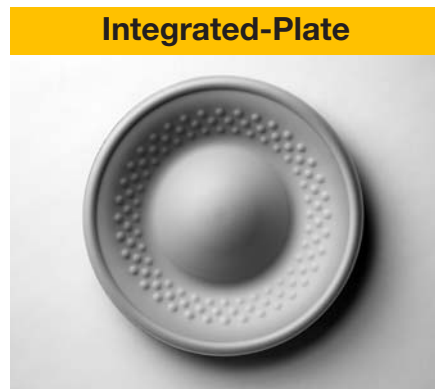
TPE-XL Thermoplastic

Versa-Matic is the innovator of Thermoplastic XL diaphragms. They have much of the chemical resistance of PTFE diaphragms, but cost significantly less and are extremely abrasion resistant. Interchangeable with Wilden® pumps.



Versa-Tuff® PTFE

Versa-Tuff® PTFE diaphragms are single-piece diaphragms combining the chemical resistance of PTFE with the flex-life of rubber. They offer three times the burst strength of standard PTFE overlays. Interchangeable with most Wilden® 1-1/4", 2" and 3" metallic pumps.



Integrated-Plate

FUSION™ PTFE Bonded

By using an exclusive bonding process and unique concave design, FUSION™ Integrated-Plate Bonded PTFE diaphragms enhance flow rates, displacement per cycle and suction lift. Backing ribs allow for extended life and deflection ridges eliminate radial cracking and potential leak paths. Easy to install — simply spin on and hand tighten.



Anti-Shock Valves

Protect your pumps, pipes and diaphragms from damage during start-ups. Our Smart Start Anti-shock valves enable compressed air to gradually increase to the desired pressure over a time period of up to 30 seconds.



Surge Suppressors

Our surge suppressors provide virtually pulse-free discharge flow, for steadier pressure and less system vibration and noise. Self-charging and self-venting.



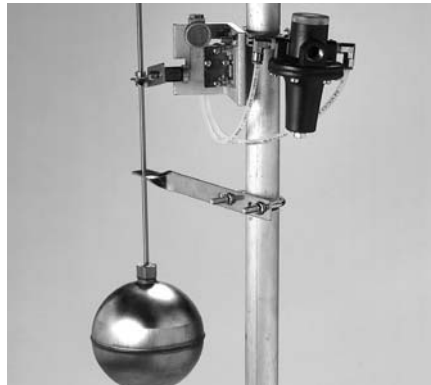
Pail & Drum Transfer Kits

These adapter kits easily connect 1/4" or 1/2" plastic pumps to a 5-gallon bucket, 120 lb. barrel or 55-gallon drum for a cleaner application.



Filter/Regulator/Lubricators

FRLs improve pump performance and reduce maintenance costs. Used to filter particles and water out of the compressed air coming into the pump, as well as control the air pressure. Also controls lubrication amounts to optimize pump performance.



Level Controllers

These units, operated entirely by mechanical and pneumatic means, port air through a special regulator to start or stop AODD pumps. Manufactured with corrosion-resistant wetted components and featuring explosion-proof construction, they require no electrical connections and are adjustable from a few inches to approximately nine feet. Ideal for sump and fluid transfer applications.



Leak Detector

By sensing liquid on the air side of a diaphragm pump, the **VERSA-SENSE™ II Electronic Leak Detector** has the ability to detect diaphragm failure. Display lights on the control unit indicate which diaphragm has failed, and which air chamber has been contaminated. The control unit can be easily wired to an audible alarm or pump shutdown device.

- 1 Incorrect o-ring placement
- 2 Inner diaphragm plate installed backwards
- 3 Deadhead (system pressure meets or exceeds air supply pressure)
- 4 Air valve or center block gaskets installed incorrectly

Pump cycles once and stops

- 1 Over lubrication
- 2 Lack of air (line size, PSI, CFM)
- 3 Centering of spool ("V" series)
- 4 Worn o-rings
- 5 Air porting in center block is plugged
- 6 Wrong type of lubrication (attack on o-rings) — see Operating Manual
- 7 Debris in air valve
- 8 Clogged manifolds
- 9 Incorrect o-ring placement
- 10 Deadhead (system pressure meets or exceeds air supply pressure)
- 11 Closed discharge valve

SYMPTOMS

**Pump will not operate
(stall or deadhead)**

- 1 Cavitation on suction side
- 2 Valve ball(s) not seating properly or sticking
- 3 Valve ball(s) missing (pushed into pump/thermal expansion or missing)
- 4 Valve ball(s)/seat(s) damaged or attacked by product (swelling, shrinking, etc.)
- 5 Vapor pressure
- 6 Clogged suction line

**Pump cycles and will not prime
or low flow**

- 1 Over lubrication/under lubrication
- 2 Wrong type of lubrication
- 3 Icing
- 4 Clogged manifolds
- 5 Deadhead (system pressure meets or exceeds air supply pressure)
- 6 Cavitation on suction side
- 7 Lack of air (line size, PSI, CFM)
- 8 Worn o-rings
- 9 Vapor pressure
- 10 Incorrect pump size

Pump running sluggish/stalling

- 1 Diaphragm failure — product leaking out exhaust
- 2 Diaphragm plates loose — product leaking out exhaust
- 3 Clamp bands loose — product leaking out clamp bands
- 4 Clamp bands stretched — product leaking out clamp bands
- 5 PTFE gasket tape ruined
- 6 Excessive positive suction pressure — product leaking around many or all clamp bands
- 7 Diaphragms stretched around center hole or bolt holes
- 8 Clamp bands not seated properly
- 9 Excessive air supply pressure

**Product leaking through exhaust
or around clamp bands**

- 1 Cavitation
- 2 Excessive flooded suction pressure
- 3 Misapplication (chemical/physical incompatibility)
- 4 Wrong type of lubrication (attack on air side)
- 5 Incorrect diaphragm plates
- 6 Diaphragm plates on backwards
- 7 Incorrect shaft with corresponding elastomer
- 8 Start up at full air pressure
- 9 Excessive dry running at high air pressure

Premature diaphragm failure

- 1 Build up of solids in water chamber
- 2 Elima-Matic pump missing bumper washers (see Operating Manual)
- 3 Loose diaphragm plates

Breaking and bending shafts

- 1 Reinstall o-rings in correct position (see Operating Manual for assistance)
- 2 Reinstall inner diaphragm plate correctly
- 3 Check system for pressure ratio to pump
- 4 Install gaskets with holes properly aligned with parts or valve and center block

- 1 Check suction condition (move pump closer to product)
- 2 Clean out around valve ball cage and valve seat area
 - replace valve ball and valve seat if worn or damaged
 - check **Chemical Resistance Chart** for compatibility and proper elastomer match
 - use heavier valve ball material
- 3 Worn valve ball or valve seat (replace)
 - thermal expansion in discharge pipe (add one way valve into piping)
 - worn fingers in valve ball cage (replace part)
- 4 Check **Chemical Resistance Chart** for compatibility and proper elastomer match
- 5 Consult factory for evaluation and recommendation.
- 6 Clean suction manifold or piping
 - install screen or bag filter

- 1 Replace diaphragms (and back up diaphragm when using PTFE)
- 1,2 Clean out entire center section of pump
- 2 Check diaphragms for damage and retighten diaphragm plates
- 3 Tighten clamp bands (check for stretching)
- 4 Replace clamp bands (apply grease to inside of clamp band to assist complete compression)
- 5 Replace PTFE gasket tape with PTFE diaphragms
- 6 Check excessive positive suction pressure (see Operating Manual for recommendations)
 - move pump closer to product
 - add accumulation tank or pulsation dampener as close to the pump as possible on suction side of pump
 - raise pump/place pump on top of tank to reduce inlet pressure
 - install flex hose on inlet and discharge as recommended installation
- 7 Check for excessive inlet pressure or air pressure
 - tighten bolts to recommended torque (see Operating Manual for recommendation)
- 8 Seat clamp bands with mallet
- 9 Check Operating Manual for recommendations

- 1 Flush pump
 - start pump slow
- 2 Add bumper washers
- 3 Double check tightness of diaphragm plates when installing replacement diaphragms

- 1 Set lubricator on lowest possible setting.
 - Elima-Matic is lube free for intermittent service
 - clean out center section
- 2 Check:
 - air line size and length
 - compressor capacity (HP vs. cfm required)
 - other usage of air in plant
 - air requirement by pump (pump capacity, product viscosity and specific gravity)
- 3 Disconnect and reconnect air
 - replace with Elima-Matic air valve
- 4 Replace o-rings
- 5 Clean porting in center block to allow proper air flow
- 6 Check compatibility of o-rings with lubrication (see Operating Manual)
- 7 Clean air valve/filter
 - check for scoring on spool and sleeve
- 8 Clean suction or discharge manifolds/piping
 - clean filter bags or screens
- 9 Reinstall o-rings in correct position (see Operating Manual for assistance)
- 10 Increase air supply pressure
- 11 Open discharge valve

- 1 Set lubricator on lowest possible setting.
 - Elima-Matic is lube free for intermittent service
- 1,2 Clean center section of pump
- 2 See Operating Manual for recommended lubrication
- 3 Replace standard "V" series with Elima-Matic
- 4 Clean manifolds to allow proper air flow
- 5 Check system to locate deadhead (equilibrium)
 - increase air supply pressure
- 6 Check suction condition (move pump closer to product)
- 7 Check:
 - air line size and length
 - compressor capacity (HP vs cfm required)
 - other usage of air in plant
 - air requirement by pump (pump capacity, product viscosity and specific gravity)
- 8 Replace o-rings
- 9,10 Consult factory for evaluation and recommendation

- 1 Enlarge pipe diameter on suction side of pump
- 1,2 Move pump closer to product
 - raise pump/place pump on top of tank to reduce inlet pressure
- 2 Add accumulation tank or pulsation dampener as close to the pump as possible
 - start pump slowly (add smart start)
- 3,4 Consult **Chemical Resistance Chart** for compatibility with products, cleaners, temperature limitations and lubrication
- 5 Check model number on pump in comparison to Operating Manual for correct part
- 6 Check Operating Manual for correct installation
- 7 Check model number on pump in comparison to Operating Manual for correct part (ie: PTFE shaft for PTFE diaphragm)
- 8 Start up pump slowly (manually or with Smart Start)
- 9 Install control or automatic shutoff

Materials of Construction — Pumps

MODEL	Acetal®	Aluminum	Cast Iron	Hastelloy C	Polypropylene	PVDF Kynar®	Stainless Steel
E6 (1/4")	■				■	■	
E8 (3/8")					●	●	
E5 (1/2")	●	●		●	●▲	●▲	●
E7 (3/4")		●					
E1 (1")		●		●	●▲	●▲	●
E4 (1-1/4" – 1-1/2")		■	■	●■	●	●	●■
E2 (2")		●■	●■	●■	●	●	●■▲▼
E2-FV (2")		■					
E3 (3")		●■	■	●■	●	●	●■

● Bolted Construction ■ Clamped Construction ▲ Split Manifold Model Available ▼ High Pressure Model Available

Diaphragms, Valve Balls, Valve Seats & Valve Seat O-rings

	Aluminum	Buna-N	PVDF	Neoprene	EPDM	Polypropylene	Polyurethane	316 Stainless Steel	TEFLON®			Encapsulated Silicone	Thermoplastics		(FKM) Fluorocarbon
									Tef-Matic™	Versa-Tuff™	FUSION™		Santoprene (TPE XL)	FDA Hytrel®	
ELASTOMERS															
DIAPHRAGMS			●		●	●				●	●		●	●	●
VALVE BALLS			●		●	●		●	●	●			●	●	●
VALVE SEATS		●	●	●	●	●	●	●	●	●			●	●	●
VALVE SEAT O-RINGS			●			●				●		●	●		●

Temperature Limits

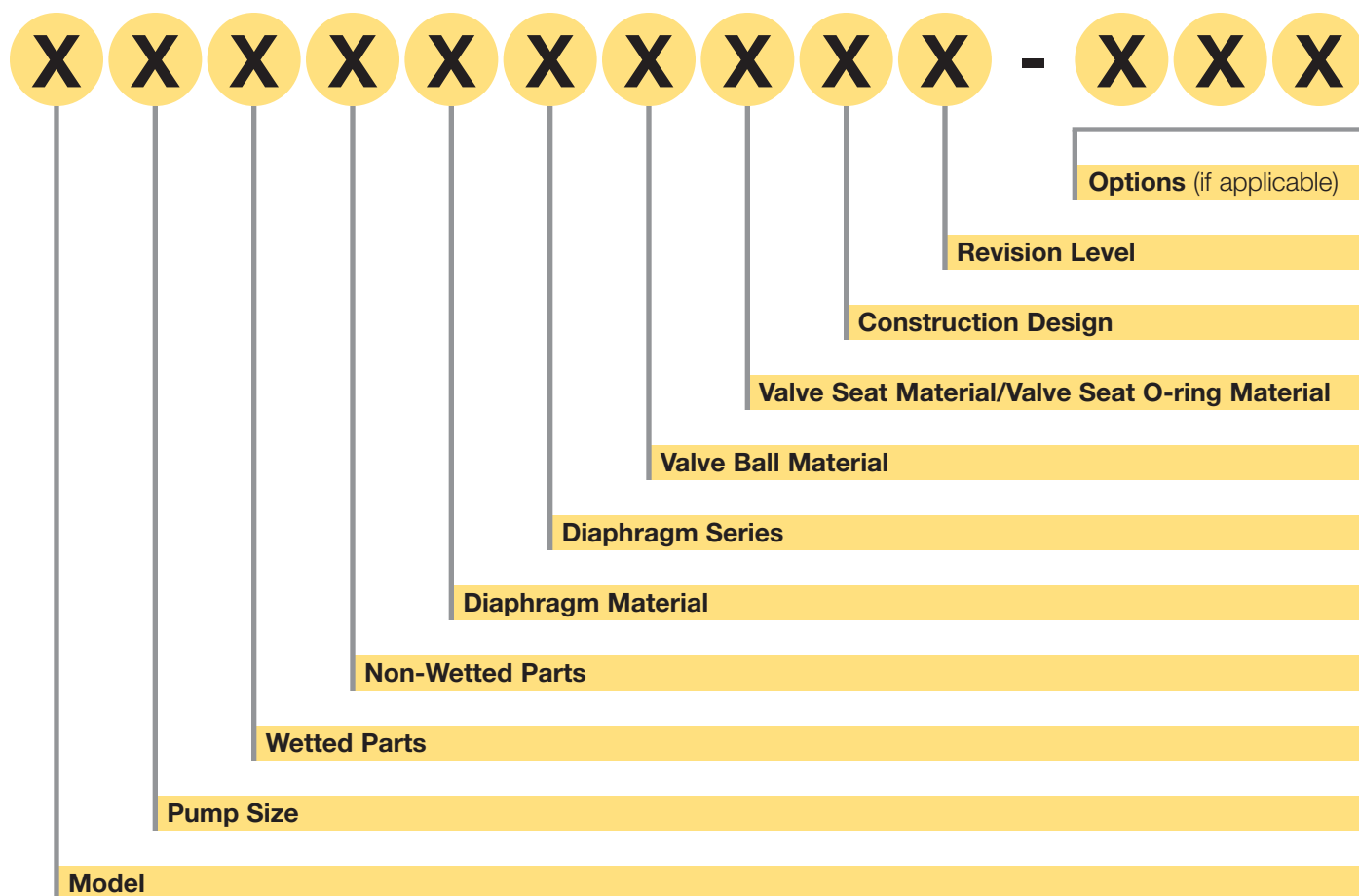
NEOPRENE	0°F (-18°C) to +200°F (93°C)
BUNA-N	+10°F (-12°C) to +180°F (82°C)
NORDEL	-60°F (-51°C) to +280°F (138°C)
(FKM) FLUOROCARBON	-40°F (-40°C) to +350°F (176°C)
PTFE	+40°F (+4°C) to +220°F (105°C)
POLYURETHANE	+10°F (-12°C) to +170°F (77°C)
SANTOPRENE (TPE XL)	-20°F (-29°C) to +300°F (149°C)
PFA	-20°F (-29°C) to +300°F (149°C)
FDA HYTREL	-20°F (-29°C) to +220°F (104°C)
METALLIC PUMPS can operate past 212°F (100°C). However, if you are operating above these limits, consult the factory for assistance.	
PLASTIC PUMPS can operate to the following temperature limits:	
• ACETAL	32°F (0°C) to 220°F (104°C)
• POLYPROPYLENE	32°F (0°C) to 175°F (79°C)
• PVDF	10°F (-12°C) to 225°F (107°C)
NOTE: These are average temperatures. Chemicals and solvents can have an effect on temperature limits.	

Wetted Material Compatibility

Fluid Solutions	Numeric pH Level	Wetted Section Construction Metals
ALKALINE	14	STAINLESS STEEL
	13	
	12	
CAUSTIC	11	CAST IRON
	10	
BASIC	9	ALUMINUM
NEUTRAL	8	
	7	
	6	CAST IRON
ACID	5	
	4	
	3	STAINLESS STEEL
	2	
	1	
	0	

Versa-Matic Pump Model Identification Codes

I.D.



39

Model

E Elima-Matic
U Ultra-Matic
V V-Series

Pump Size

6 1/4"
8 3/8"
5 1/2"
7 3/4"
1 1"
4 1-1/4" or 1-1/2"
2 2"
3 3"

Wetted Parts

A Aluminum
C Cast Iron
S Stainless Steel
H Hastelloy C
P Polypropylene
K Kynar
G Groundable Acetal
B Aluminum

Non-Wetted Parts

A Aluminum
S Stainless Steel
P Polypropylene
G Groundable Acetal
Z PTFE-coated Aluminum
J Nickel-plated Aluminum
C Cast Iron
Q Epoxy-Coated Aluminum

Diaphragm Material

1 Neoprene
2 Buna-N
3 (FKM) Fluorocarbon
4 Nordel
5 PTFE
6 XL
7 Hytrel
9 Geolast

Diaphragm Series

R Rugged
D Dome
X Thermo-Matic
T Tef-Matic (2-piece)
B Versa-Tuff (1-piece)
F FUSION (one-piece integrated plate)

Valve Ball Material

1 Neoprene
2 Buna-N
3 (FKM) Fluorocarbon
4 Nordel
5 PTFE
6 XL
7 Hytrel
8 Polyurethane
9 Geolast
A Acetal
S Stainless Steel

Valve Seat/Valve Seat O-ring Material

1 Neoprene
2 Buna-N
3 (FKM) Fluorocarbon
4 Nordel
5 PTFE
6 XL
7 Hytrel
8 Polyurethane
9 Geolast
A Aluminum w/ PTFE O-rings
S Stainless Steel w/ PTFE O-rings
C Carbon Steel w/ PTFE O-rings
H Hastelloy C w/ PTFE O-rings
T PTFE Encapsulated Silicone O-rings

Construction Design

9 Bolted
0 Clamped

A division of Versa-Matic Pump Company, Pumper Parts is your single source for Air-Operated Double Diaphragm (AODD) pump parts.

The company was formed to meet the demands for faster delivery of replacement parts at competitive prices. Pumper Parts is a global supplier of quality replacement parts that fit **Wilden®**, **ARO®**, and **Yamada®** air-operated double diaphragm pumps.



Pumper Parts serves customers all over the world in a variety of markets, including chemical, paints & coatings, food processing, pharmaceutical, construction, mining, utilities, pulp & paper, metal finishing, and general industrial. A worldwide network of fully-stocked distributors and an extensive staff of qualified professionals are committed to supporting these customers. Pumper Parts is housed in a state-of-the-art facility to ensure that proper stock levels are maintained.

PUMPER PARTS LLC
A Unit of IDEX Corporation
6017 Enterprise Drive
Export, PA 15632-8969

Tel: 724-387-1776
Fax: 724-387-1774
www.pumperparts.com
info@pumperparts.com



Pumper Parts and its products are not affiliated with any of the original equipment manufacturers referenced herein. All original equipment manufacturers' names, colors, pictures, descriptions and part numbers are used for identification purposes only.

Pumper Parts® is a registered trade name of IDEX Corporation. All other trademarks, registered trademarks and product names are the property of their respective owners.

The Pumper Parts Promise

All Pumper Parts products are:

- Engineered to perform as well as or better than OEM parts — guaranteed
- Manufactured to meet or exceed the highest quality standards in the industry
- Honored with the same repair parts warranty as the OEM
- Priced competitively — providing savings and value

Pumper Parts Tools

The Pumper Parts website helps you find the parts you need fast and efficiently by allowing searches by product number or description. Additionally, a Chemical Compatibility database is provided so that you can quickly find what materials are most compatible with a variety of liquids.



Hytrel® and Nordel® are registered trademarks of DuPont. Kynar® is a registered trademark of Penwalt Corp. 3M™ is a trademark of the 3M Corporation. Tri-Clamp® is a registered trademark of Tri-Clover, Inc. Wilden® is a registered trade name of Wilden Pump and Engineering Company, a Dover Resources Company.

Elima-Matic®, Tef-Matic™, Thermo-Matic™, Versa-Dome®, Versa-Matic®, Versa-Sense™, Versa-Tuff® and Versa-Rugged VR™ are registered tradenames and trademarks of IDEX Corporation. Some Versa-Matic Tool, Inc. products are subject to patent pending applications and issued patents. Elima-Matic U.S. Patent No. 5,326,234.



VERSA-MATIC® PUMP COMPANY

A Unit of IDEX Corporation
6017 Enterprise Drive
Export, PA 15632-8969

(724) 327-7867
Fax: (724) 327-4300
www.versamatic.com

